

# **Epson Stylus® Photo R3000 Series**

## **Basics**

## **Copyright Notice**

All rights reserved. No part of this publication may be reproduced, stored in a retrieval system, or transmitted in any form or by any means, electronic, mechanical, photocopying, recording, or otherwise, without the prior written permission of Seiko Epson Corporation. The information contained herein is designed only for use with this Epson product. Epson is not responsible for any use of this information as applied to other equipment.

Neither Seiko Epson Corporation nor its affiliates shall be liable to the purchaser of this product or third parties for damages, losses, costs, or expenses incurred by purchaser or third parties as a result of: accident, misuse, or abuse of this product or unauthorized modifications, repairs, or alterations to this product, or (excluding the U.S.) failure to strictly comply with Seiko Epson Corporation's operating and maintenance instructions.

Seiko Epson Corporation shall not be liable for any damages or problems arising from the use of any options or any consumable products other than those designated as Original Epson Products or Epson Approved Products by Seiko Epson Corporation.

## **Responsible Use of Copyrighted Materials**

Epson encourages each user to be responsible and respectful of the copyright laws when using any Epson product. While some countries' laws permit limited copying or reuse of copyrighted material in certain circumstances, those circumstances may not be as broad as some people assume. Contact your legal advisor for any questions regarding copyright law.

## **Trademarks**

EPSON, Epson Stylus, Epson UltraChrome K3, and Supplies Central are registered trademarks and EPSON Exceed Your Vision is a registered logomark of Seiko Epson Corporation.

UltraSmooth is a registered trademark, PhotoEnhance is a trademark, and Epson Connection is a service mark of Epson America, Inc.

General Notice: Other product names used herein are for identification purposes only and may be trademarks of their respective owners. Epson disclaims any and all rights in those marks.

This information is subject to change without notice.

# Contents

<b>Introduction</b>	<b>5</b>
<b>Loading Paper</b>	<b>6</b>
Loading Paper in the Sheet Feeder	6
Loading Fine Art Paper	8
Loading Roll Paper	11
Loading Thick Media	14
Available Epson Papers	16
<b>Printing From Start to Finish</b>	<b>20</b>
Printing in Windows	20
Printing With Mac OS X	24
Selecting the Correct Paper Type	28
<b>Printing on CDs and DVDs</b>	<b>30</b>
Loading a CD or DVD	30
Printing on a CD or DVD	32
Removing Your Printed CD/DVD	34
<b>Maintaining Your Printer</b>	<b>35</b>
Checking and Cleaning the Print Head	35
Checking and Aligning the Print Head	37
Checking the Ink Cartridge Status	37
Replacing Ink Cartridges	39
Switching Black Ink Types	43
Cleaning the Rollers	45
<b>Network Setup</b>	<b>46</b>
Wireless Network Setup	46
Wired (Ethernet) Network Setup	54

**Solving Problems . . . . . 57**  
Checking for Software Updates . . . . . 57  
Problems and Solutions . . . . . 57  
Where to Get Help . . . . . 61  
**Notices. . . . . 62**

# Introduction

Your Epson Stylus® Photo R3000 Series printer gives you exhibition quality prints on a wide variety of glossy and matte papers in many sizes.

Your outstanding printouts result from these advanced features:

- Epson UltraChrome K3® with Vivid Magenta ink cartridges for unprecedented gray balance, outstanding tonal range, and astounding color
- Enhanced media handling of fine art paper, thick media up to 1.3 mm, and rolls for virtually any kind of print up to 13 × 44 inches, with or without borders
- Resolutions up to 5760 × 1440 optimized dpi (dots per inch) with droplets as small as 2 picoliters for the finest details
- Direct printing onto ink jet-printable CDs and DVDs for a professional look
- Hi-Speed USB 2.0, 100Mbps Ethernet®, and Wi-Fi CERTIFIED™ 802.11n for fast, wireless connectivity to multiple computers
- Downloadable Premium ICC Profiles for precise color management

Please follow these guidelines as you read your documentation:

**Warning:**

Warnings must be followed carefully to avoid bodily injury.

**Caution:**

Cautions must be observed to avoid damage to your equipment.

**Note:**

Notes contain important information about your R3000 Series.

**Tip:**

Tips contain hints for better printing.

# Loading Paper

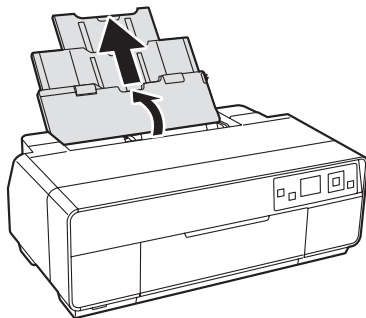
You can print on a variety of paper types in the sheet feeder, or use the manual feed tray for fine art papers (see page 8) and thick media such as poster board (see page 14). To print multiple photos, panoramics, and banners, load roll paper using the roll paper holders (see page 11).

## Loading Paper in the Sheet Feeder

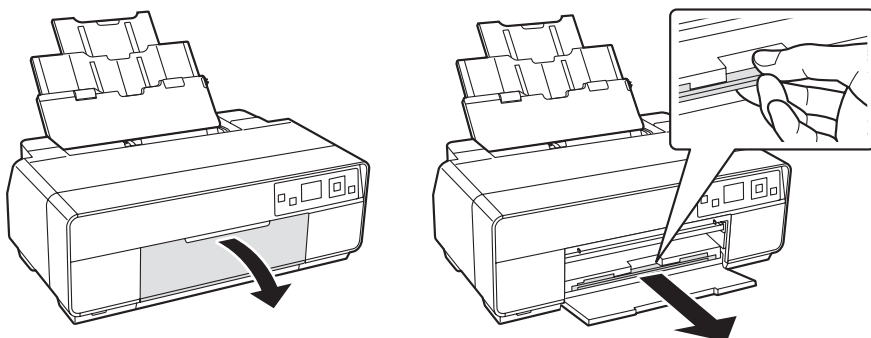
You can load the following paper types and quantities in the sheet feeder. Load other paper types in the manual feed tray (see page 8) or roll paper holders (see page 11).

Paper type	Maximum sheets by size
Plain paper	Approximately 120
Epson Presentation Paper Matte	100 (Letter) 50 (B or Super B)
Epson Bright White Paper	80
Epson Photo Paper Glossy	30
Epson Premium Photo Paper Glossy Epson Ultra Premium Photo Paper Glossy	30 (4 × 6 inch, 8 × 10 inch, Letter, 11 × 14 inch) 20 (5 × 7 inch) 10 (B, A3, Super B)
Epson Ultra Premium Photo Paper Luster Epson Ultra Premium Presentation Paper Matte	30 (Letter) 10 (A3 or Super B)
Epson Premium Photo Paper Semi-gloss	30 (4 × 6 inch or Letter) 10 (B)
Epson Premium Presentation Paper Matte	30 (8 × 10 inch or Letter) 10 (11 × 14 inch, A3, or Super B)
Epson Premium Presentation Paper Matte Double-sided Epson Photo Quality Self-adhesive Sheets	1 sheet

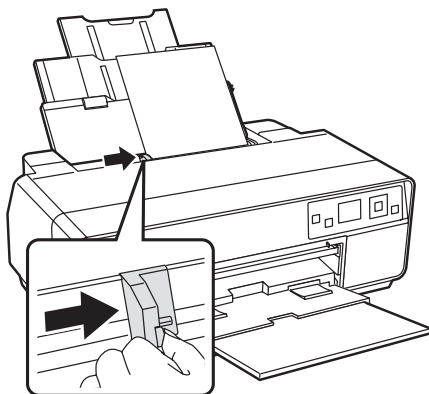
1. Open the paper support and pull up the extensions.



2. Open the front cover, then extend the output tray.



3. Insert paper, glossy or printable side up, short edge first, against the right side and beneath the tab. Then press the button on the edge guide and slide it against the paper (but not too tightly).



Always load paper short edge first, even for landscape printing.  
Load letterhead or pre-printed paper top edge first.

**Note:**

The edge guide moves slightly during paper feeding and printing.  
Do not adjust it while printing is in progress.

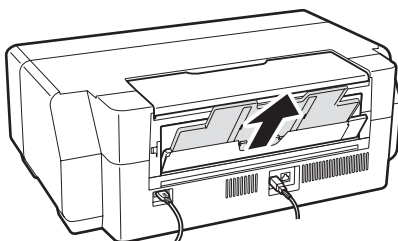
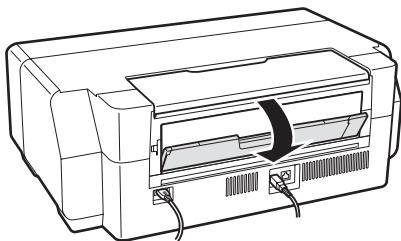


## Loading Fine Art Paper

You can print professional quality photos on these paper types using the manual feed tray (see page 16 for available sizes):

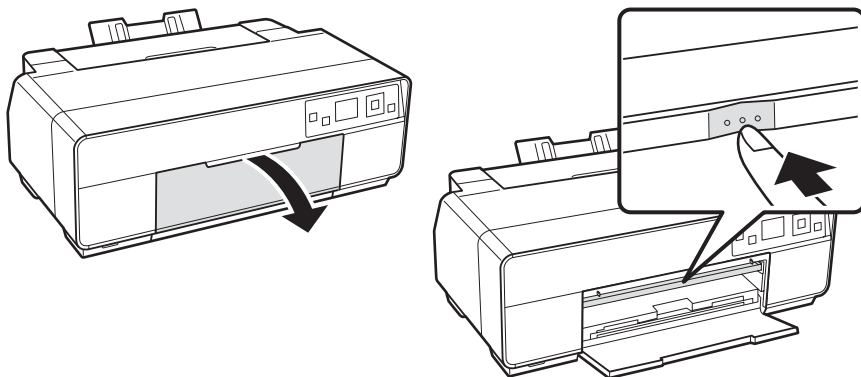
- Epson Velvet Fine Art Paper
- Epson Watercolor Paper Radiant White
- Epson UltraSmooth® Fine Art Paper
- PremierArt™ Matte Scrapbook Photo Paper for Epson
- Epson Exhibition Fiber Paper
- Epson Hot Press Bright
- Epson Hot Press Natural
- Epson Cold Press Bright
- Epson Cold Press Natural

1. Turn on the printer.
2. Remove any paper from the sheet feeder and close the paper support. Remove roll paper if it's currently being used.
3. Open the rear support and extend it fully.





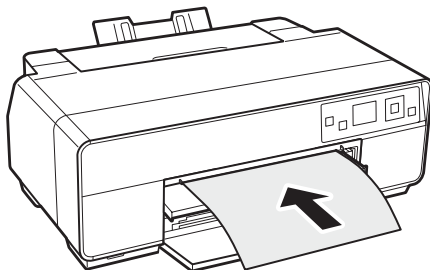
4. Open the front cover, then push the center of the manual feed tray to extend it.



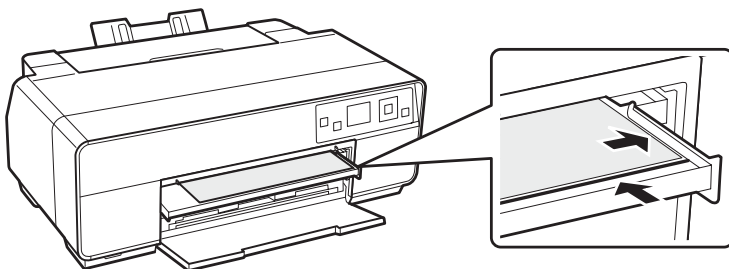
5. Insert a single sheet of fine art paper. Insert it short edge first with the printable side face-up.

**Note:**

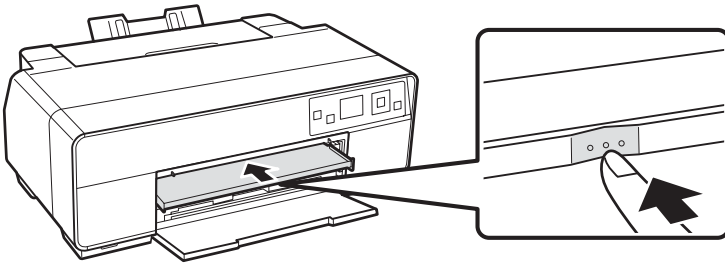
Load paper short edge first, no matter which way your photo faces. Check the paper package for any additional loading instructions.



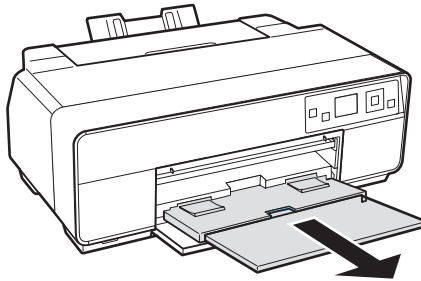
6. Feed the paper up to the line on the tray. Make sure the paper is flush against the right.




7. Press the **OK** button. The paper loads inside the printer.
8. When you see a message on the screen, close the manual feed tray. Push it in until it latches.



9. Extend the output tray.



**Note:**

To eject paper, make sure the control panel shows **Ready** and press the  button.

# Loading Roll Paper

You can load roll paper for printing large images, panoramic images, or multiple photos, with or without borders.

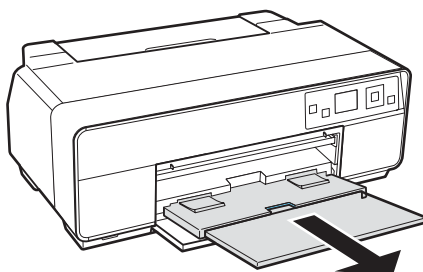
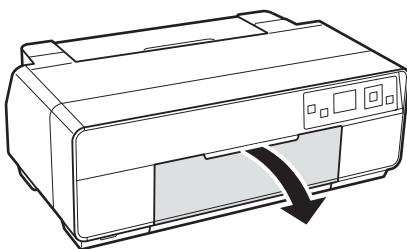
You can load 13-inch wide roll paper.

(See page 16 for a list of roll paper types and sizes.)

## Tip:

It's a good idea to check the ink status and replace cartridges, if necessary, before printing a large print job (see page 37). If you need to replace a cartridge while printing, you can continue to print but you might notice a color difference depending on drying conditions.

1. Turn on the printer.
2. Remove any paper loaded in the sheet feeder.
3. Open the front cover, then extend the output tray.

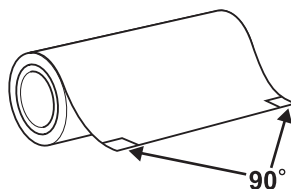


4. Remove any tape and protective paper from the end of the roll. Make sure the paper is cut straight across to avoid paper feeding problems.

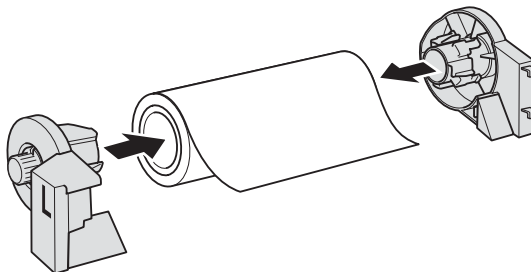
## Note:

Avoid touching the surface of your paper.

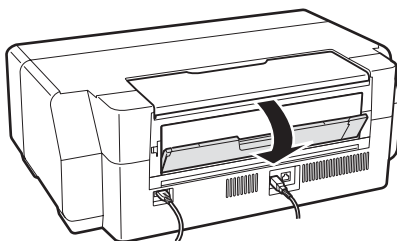
With canvas media that you have previously loaded, it's a good idea to cut the edge straight each time you reload it.



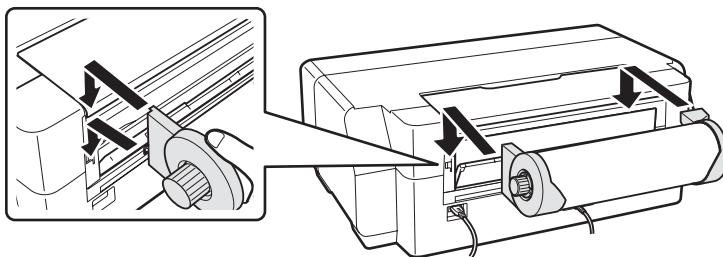
5. Place the roll paper holders on each end of the paper roll as shown. The holders are labeled L and R (for left and right), as viewed from the front of the printer.



6. Open the rear support but don't extend it.



7. Attach the roll paper holders as shown. Hook the holders onto the attachment points indicated with orange labels.



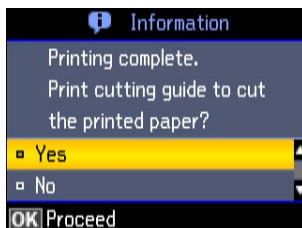
8. Feed the paper into the printer until it meets resistance. In a few seconds, the paper loads automatically.

**Note:**

When loading canvas media, leave 2 to 3 inches of slack in the roll as it feeds and prints for the best results. If you have trouble feeding canvas media, check that the edge is straight and reload it, making sure to keep the roll slack.

# Removing Roll Paper Prints and Roll Paper

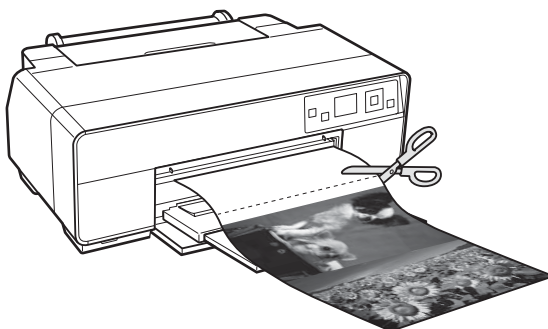
1. When printing is finished, you see this screen:



Select **Yes** to print a cut line and feed the paper.

(If you select **No**, you return to the Ready screen. Select this option to continue printing on the same roll.)


2. Use scissors to cut the paper along the cut line.



3. Follow the instructions on the screen to unload the paper. Turn the knobs on the roll paper holders backward as the paper unloads, then remove the paper and holders from the printer.

Store unused roll paper in its original package away from high temperatures, humidity, and direct sunlight.

## Note:

You can also unload roll paper whenever the control panel shows **Ready** by pressing the  button.

---

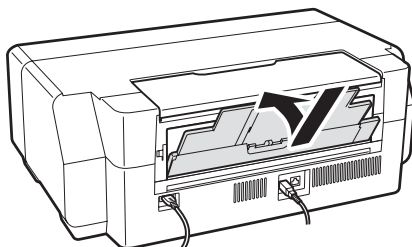
# Loading Thick Media

Use the manual feed tray to load 13 × 19-inch media that is 0.7 to 1.3 mm thick.

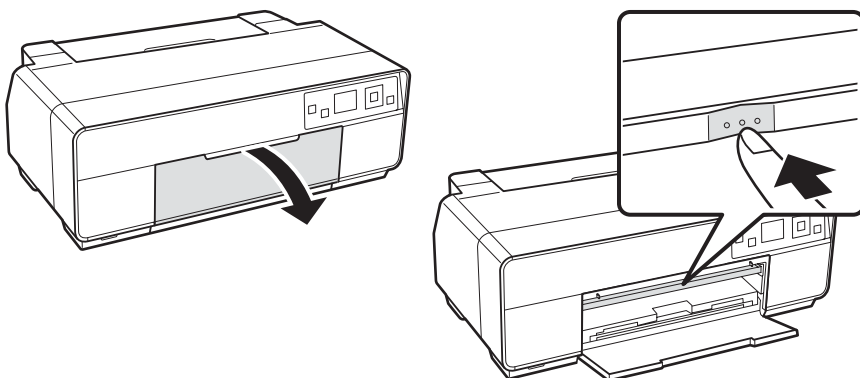
**Note:**

Be sure to leave at least 13 inches (32 cm) of space behind the printer for the media to feed through.

1. Turn on the printer.
2. Remove any roll paper or paper loaded in the sheet feeder. Close the rear support if it's open.



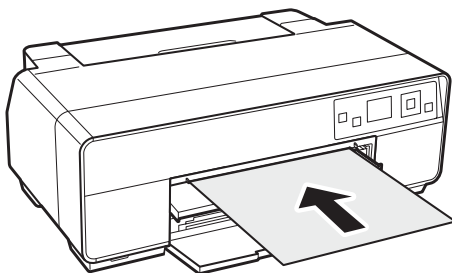
3. Open the front cover, then push the center of the manual feed tray to extend it.



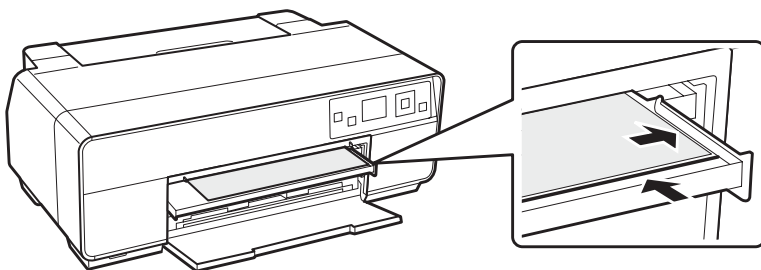
4. Insert a single sheet of thick media. Insert it short edge first with the printable side face-up.

**Note:**

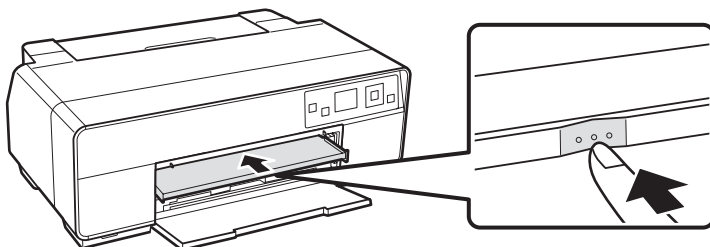
Never try to load media from the rear, or you could damage the printer.



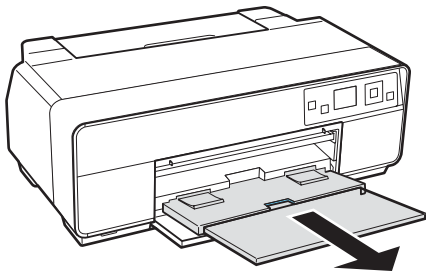
5. Feed the paper up to the line on the tray. Make sure the paper is flush against the right.




6. Select **Poster Board** on the printer's control panel. The paper loads inside the printer.
7. When you see a message on the screen, close the manual feed tray. Push it in until it latches.



8. Extend the output tray.



**Note:**  
To eject paper, make sure the control panel shows **Ready** and press the  button. Do not extend the manual feed tray while printing, or you may damage the printer.

# Available Epson Papers

Epson offers a wide array of high quality papers, making it easy to maximize the impact of your photos, presentations, and creative projects.

You can purchase genuine Epson ink and paper at Epson Supplies Central<sup>SM</sup> at [www.epson.com/ink3](http://www.epson.com/ink3) (U.S. sales) or [www.epson.ca](http://www.epson.ca) (Canadian sales). You can also purchase supplies from an Epson authorized reseller. To find the nearest one, call 800-GO-EPSON (800-463-7766).

Paper name	Size	Part number	Sheet count
Epson Ultra Premium Photo Paper Glossy	4 × 6 inches	S041934 S042181 S042174	50 60 100
	5 × 7 inches	S041945	20
	8 × 10 inches	S041946	20
	Letter (8.5 × 11 inches)	S041935 S042182 S042175	20 25 50



Paper name	Size	Part number	Sheet count
Epson Premium Photo Paper Glossy	4 × 6 inches	S041808 S041727 S042119	40 100 250
	5 × 7 inches	S041464 S042120	20 250
	8 × 10 inches	S041465 S042121	20 250
	Letter (8.5 × 11 inches)	S041286 S041283 S041667	20 25 50
	11 × 14 inches	S041466	20
	B (11 × 17 inches)	S041290	20
	A3 (11.7 × 16.5 inches)	S041288	20
	Super B (13 × 19 inches)	S041289	20
	13 inches × 32 feet	S041378	Roll
Epson Photo Paper Glossy	4 × 6 inches	S041809 S042038	50 100
	Letter (8.5 × 11 inches)	S041141 S041649 S041271	20 50 100
	B (11 × 17 inches)	S041156	20
	Super B (13 × 19 inches)	S041143	20
Epson Premium Photo Paper Semi-gloss	4 × 6 inches	S041982 S042122	40 250
	Letter (8.5 × 11 inches)	S041331	20
	Super B (13 × 19 inches)	S041327	20

Paper name	Size	Part number	Sheet count
Epson Ultra Premium Photo Paper Luster	Letter (8.5 × 11 inches)	S041405 S041913	50 250
	A4 (8.3 × 11.7 inches)	S041602	250
	A3 (11.7 × 16.5 inches)	S041406	50
	Super B (13 × 19 inches)	S041407 S041604	50 100
	13 inches × 32.8 feet	S041409	Roll
Epson Exhibition Fiber Paper	Letter (8.5 × 11 inches)	S045033	25
	Super B (13 × 19 inches)	S045037	25
Epson Ultra Premium Presentation Paper Matte	Letter (8.5 × 11 inches)	S041341 S041914	50 250
	A4 (8.3 × 11.7 inches)	S041603	250
	A3 (11.7 × 16.5 inches)	S041343	50
	Super B (13 × 19 inches)	S041339 S041605	50 100
Epson Premium Presentation Paper Matte	8 × 10 inches	S041467	50
	Letter (8.5 × 11 inches)	S041257 S042180	50 100
	11 × 14 inches	S041468	50
	A3 (11.7 × 16.5 inches)	S041260	50
	Super B (13 × 19 inches)	S041263	50
Epson Premium Presentation Paper Matte Double-sided	Letter (8.5 × 11 inches)	S041568	50
Epson Presentation Paper Matte	Letter (8.5 × 11 inches)	S041062	100
	Legal (8.5 × 14 inches)	S041067	100
	B (11 × 17 inches)	S041070	100
	Super B (13 × 19 inches)	S041069	100
Epson Velvet Fine Art Paper	Letter (8.5 × 11 inches)	S041636	20
	Super B (13 × 19 inches)	S041637	20

Paper name	Size	Part number	Sheet count
Epson Watercolor Paper Radiant White	Super B (13 × 19 inches)	S041351	20
Epson UltraSmooth Fine Art Paper 325 gsm	Super B (13 × 19 inches)	S041896	25
PremierArt Matte Scrapbook Photo Paper for Epson	Letter (8.5 × 11 inches)	SCR1002	20
	12 × 12 inches	SCR1003	10
Epson Exhibition Canvas Satin	13 inches × 20 feet	S045248	Roll
Epson Exhibition Canvas Matte	13 inches × 20 feet	S045255	Roll
Epson Bright White Paper	Letter (8.5 × 11 inches)	S041586	500
Epson Photo Quality Self-adhesive Sheets	A4 (8.3 × 11.7 inches)	S041106	10
Epson Hot Press Bright	Letter (8.5 × 11 inches)	S042327	25
	Super B (13 × 19 inches)	S042330	25
Epson Hot Press Natural	Letter (8.5 × 11 inches)	S042317	25
	Super B (13 × 19 inches)	S042320	25
Epson Cold Press Bright	Letter (8.5 × 11 inches)	S042307	25
	Super B (13 × 19 inches)	S042310	25
Epson Cold Press Natural	Letter (8.5 × 11 inches)	S042297	25
	Super B (13 × 19 inches)	S042300	25

# Printing From Start to Finish

This section describes basic printing from your Windows® or Macintosh® computer. For detailed instructions, see the online *User's Guide*.

You can also print label designs directly onto ink jet-printable CDs or DVDs. See page 30 and the online *User's Guide* for details.

To print photos directly from a PictBridge®-compatible digital camera connected to the R3000 Series, see the online *User's Guide*.

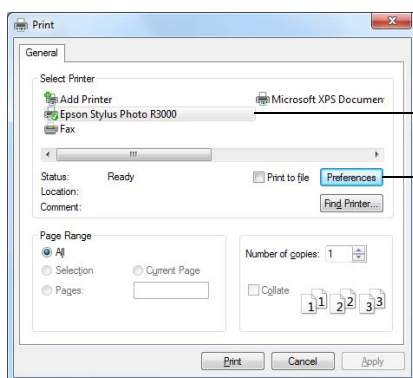
## Tip:

It's a good idea to check for updates to your Epson Stylus Photo R3000 Series software. See "Checking for Software Updates" on page 57 for instructions.

---

## Printing in Windows

1. Open a photo or document in a printing program, and select the print option.

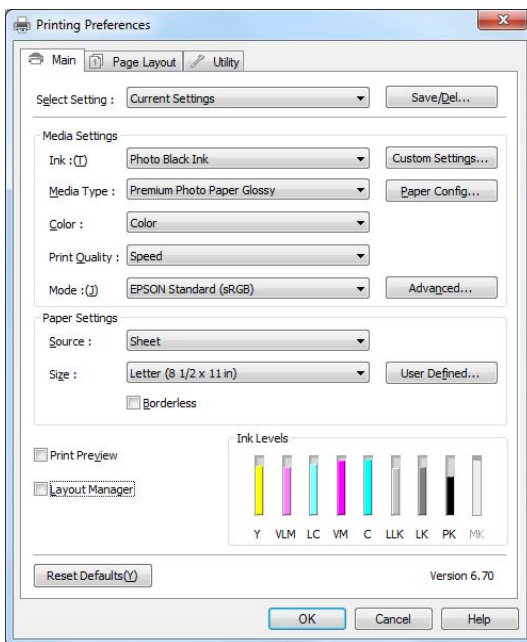


2. Select your product, then click the **Preferences** or **Properties** button.

## Note:

If you see a **Setup**, **Printer**, or **Options** button, click it. Then click **Preferences** or **Properties** on the next screen.

3. On the Main tab, select the **Media Type** setting that matches the paper you loaded (see page 28).

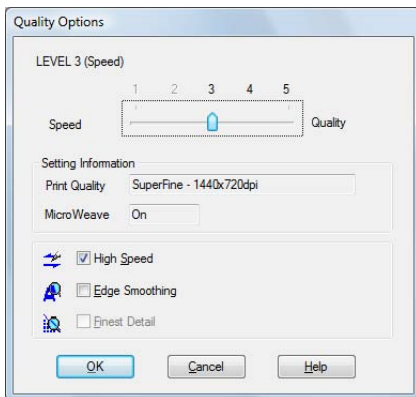


**Note:**

The available media types vary depending on the type of black ink currently selected as the **Ink** setting. To avoid changing black ink more often than necessary, switch the printer to the type of black ink you usually use (see page 43).

4. For the **Color** setting, select **Color** for any type of photographic printing. To print black-and-white photos using **Advanced B&W Photo** mode, see your online *User's Guide* for instructions.

5. For the **Print Quality** setting, select **Speed**, **Quality**, or **Max Quality** (available with certain media types only), or select **Quality Options** to display a window like this:



Use the Speed/Quality slider to set from the following quality levels:

- **LEVEL 1** for fast printing with draft quality.
- **LEVEL 2** for everyday text and image printing.
- **LEVEL 3** for photos and graphics with good print quality and speed.
- **LEVEL 4** for photos and graphics with high print quality and slower speed.
- **LEVEL 5** for the best print quality and slowest print speed (best to use for canvas media).

Then select from the following additional options, and click **OK**:

- **High Speed** for fast, bidirectional printing at lower quality.
- **Edge Smoothing** to improve the quality of low-resolution images.
- **Finest Detail** for sharper edges on vector-based data including text, graphics, and line art. (This setting does not affect photographs.)

6. Select one of the following as the **Mode** setting:

- **Epson Standard (sRGB)** increases the contrast in images.
- **Adobe RGB** matches images colors to the Adobe RGB color standard. Use this setting if your source file was captured in Adobe RGB.

**Note:**

For color management instructions, see <http://www.epson.com/SPR3000Profiles>. For more information about print settings, click **Help** or see your online *User's Guide*.

7. Choose the paper **Source** in which you loaded your paper:

- **Sheet:** for sheets of paper loaded in the sheet feeder.
- **Roll Paper:** for photos or panoramics up to 27 inches (68.6 cm) long. If desired, click **Print page frame** to print a cutting guideline around each photo.
- **Roll Paper (Banner):** for photos or banners over 27 inches (68.6 cm) long. If desired, click **Save Roll Paper** to feed small amounts of roll paper between each banner.
- **Front - Fine Art:** for a sheet of compatible paper loaded in the manual feed tray (see page 8 for loading instructions).
- **Front - Poster Board:** for thick media loaded in the manual feed tray (see page 14).
- **CD/DVD:** for a disc loaded in the CD/DVD tray (see page 30 for printing instructions).

8. Select the paper **Size** setting for the paper you loaded.

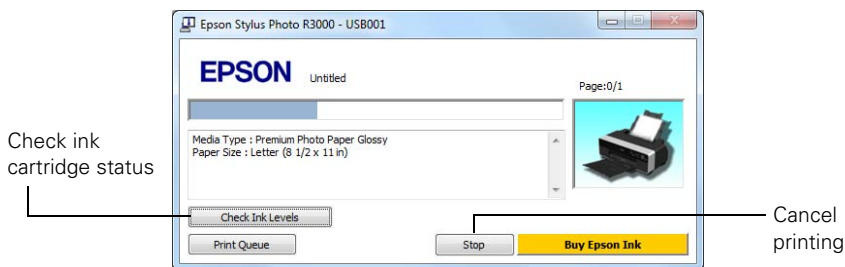
If you loaded roll paper, create a custom paper size. Select **User Defined** in the **Size** menu, then click the **User Defined** button. Type a name for your custom size. For the **Paper Width**, enter **12.95** for Super B-size rolls. For the **Paper Height** enter the desired length up to 44 inches. Click **Save**, click **OK**, then select your custom paper size in the **Size** menu.

**Note:**

For roll paper, make sure the maximum width of your photo is 13 inches to fit in the width of your roll paper (set the margins to 0 in your application software).

9. If you're printing borderless photos, select **Borderless**, if available. To adjust the borderless expansion setting click **Expansion**.
10. To reduce or enlarge your printout or print double-sided, click the **Page Layout** tab and select settings as necessary. (Click **Help** or see your online *User's Guide* for details.)
11. Click **OK** to save your settings.
12. Click **OK** or **Print** to start printing.

This window appears and shows the progress of your print job.



**Note:**

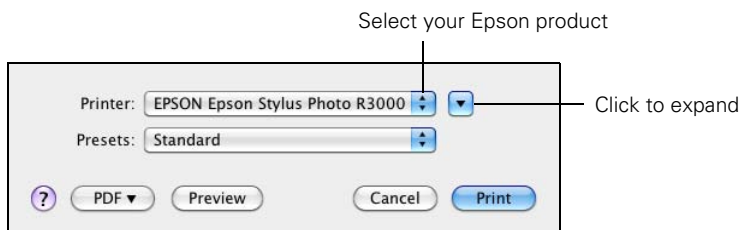
If you're printing on roll paper, see page 13 for instructions on removing your printed photos and paper.

---

## Printing With Mac OS X

Follow the steps below to print from Mac OS® X 10.5 to 10.6.

1. Open a photo or document in a printing program, open the **File** menu, and select **Print**.
2. Select your product as the **Printer** setting.
3. Click the arrow to expand the Print window, if necessary.

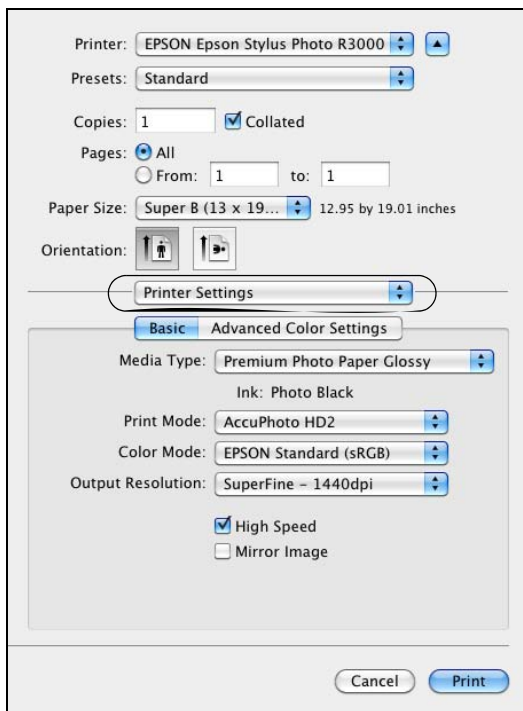




4. Select the **Paper Size** setting for the paper size and source you are using:
  - To print a borderless photo, select a paper size with a **Borderless** option.
  - To print on roll paper, create a custom paper size. Select **Manage Custom Sizes** as the **Paper Size** option. Click the + (plus sign), double-click **Untitled** and give your paper size a name. For the Width, enter **12.95** for Super B-size rolls. For the Height, enter the desired length up to 44 inches. Set the margins to **0** and click **OK**. Then select your custom paper size in the size menu.

**Note:**  
For roll paper, make sure the maximum width of your photo is set to 13 inches to fit in the width of your roll paper (set the margins to **0** in your application software).

  - To print on paper loaded in the manual feed tray, select a paper size with a **Front - FineArt** (or **Fr.-FineArt**) option.
5. Choose portrait or landscape as the **Orientation** setting for your document or photo.
6. Select **Printer Settings** from the pop-up menu.



**Note:**

In certain programs, you may need to select **Advanced** before you can select **Printer Settings**. For more information about print settings, click the **?** button.

7. Select the **Media Type** setting that matches the paper you loaded (see page 28).

**Note:**

The ink type will change depending on the size and type of paper you select. To avoid changing black ink more often than necessary, switch the printer to the type of black ink you usually use (see page 43).

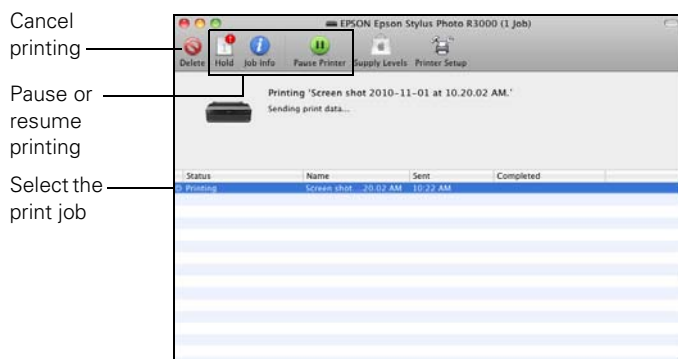
8. For the **Print Mode** setting, select **AccuPhoto HD2** for any type of photographic printing. To print black-and-white photos using **Advanced B&W Photo** mode, see your online *User's Guide* for instructions.
9. Select one of the following as the **Color Mode** setting:
  - **Epson Standard (sRGB)** increases the contrast in images.
  - **Adobe RGB** matches images colors to the Adobe RGB color standard. Use this setting if your source file was captured in Adobe RGB.

**Note:**

For color management instructions, see <http://www.epson.com/SPR3000Profiles>. For more information about print settings, click **Help** or see your online *User's Guide*.

10. Select an **Output Resolution** setting (available settings depend on selected media type):
  - **Draft:** for fast printing with draft quality
  - **Fine - 720dpi:** for everyday text and image printing
  - **SuperFine - 1440dpi:** for photos and graphics with good print quality and speed
  - **Photo - 1440dpi:** for photos and graphics with high print quality and slower speed
  - **SuperPhoto - 5760dpi:** for the best print quality and slowest print speed (best to use for canvas media)
11. Click **Print**.

12. To monitor your print job, click the  printer icon in the dock.



**Note:**

If you're printing on roll paper, see page 13 for instructions on removing your printed photos and paper, if necessary.

# Selecting the Correct Paper Type

Select the correct **Media Type** setting in your printer software (see page 21 for Windows or page 26 for Mac OS). This adjusts ink coverage for your media.

*Media usable with Photo Black ink (see page 43):*

For this paper/media	Select this setting
Plain paper Epson Bright White Paper	Plain Paper/Bright White Paper*
Epson Photo Paper Glossy	Photo Paper Glossy
Epson Premium Photo Paper Glossy Epson Ultra Premium Photo Paper Glossy	Premium Photo Paper Glossy
Epson Premium Photo Paper Semi-gloss	Premium Photo Paper Semi-Gloss
Epson Ultra Premium Photo Paper Luster	Ultra Premium Photo Paper Luster
Epson Exhibition Fiber Paper**	Exhibition Fiber Paper
Epson Exhibition Canvas Satin	Exhibition Canvas Satin
Ink jet-printable CD or DVD	CD/DVD*
	CD/DVD Premium Surface*

\* Mac OS: When printing with Photo Black ink, select the PK (Photo Black) option.

\*\* For the best results on this paper, print using a premium ICC profile, downloadable from Epson at <http://www.epson.com/SPR3000Profiles>.

*Media usable with Matte Black ink (see page 43):*

For this paper/media	Select this setting
Plain paper Epson Bright White Paper	Plain Paper/Bright White Paper*
Epson Presentation Paper Matte	Presentation Paper Matte
Epson Ultra Premium Presentation Paper Matte	Ultra Premium Presentation Matte
Epson Premium Presentation Paper Matte Epson Photo Quality Self-adhesive Sheets	Premium Presentation Paper Matte
Epson Premium Presentation Paper Matte Double-sided	Double-Sided Matte Paper

*Media usable with Matte Black ink (see page 43):*

For this paper/media	Select this setting
Epson Velvet Fine Art Paper	Velvet Fine Art Paper
Epson Watercolor Paper Radiant White	Watercolor Paper - Radiant White
Epson UltraSmooth Fine Art Paper 325 gsm PremierArt Matte Scrapbook Photo Paper for Epson	UltraSmooth Fine Art Paper
Epson Exhibition Canvas Matte	Exhibition Canvas Matte
Epson Hot Press Bright	Hot Press Bright
Epson Hot Press Natural	Hot Press Natural
Epson Cold Press Bright	Cold Press Bright
Epson Cold Press Natural	Cold Press Natural
Ink jet-printable CD or DVD	CD/DVD*
	CD/DVD Premium Surface*

\* Mac OS: When printing with Matte Black ink, select the MK (Matte Black) option.

# Printing on CDs and DVDs

You can use your R3000 Series and the Epson Print CD software that came with it to print label designs directly onto ink jet-printable CDs or DVDs. To prevent errors, you should burn files, music, or video onto your CD or DVD before printing.

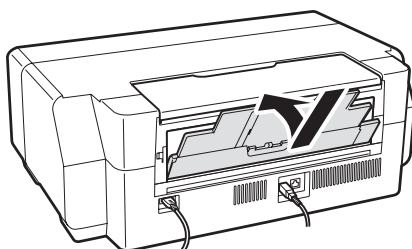
Follow the steps in these sections:

- “Loading a CD or DVD” on page 30
- “Printing on a CD or DVD” on page 32
- “Removing Your Printed CD/DVD” on page 34

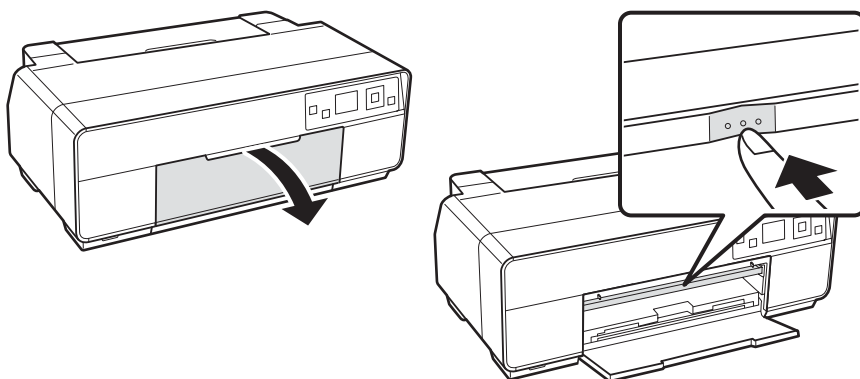
---

## Loading a CD or DVD

1. Turn on the printer.
2. Remove any roll paper or paper loaded in the sheet feeder. Close the rear support if it's open.



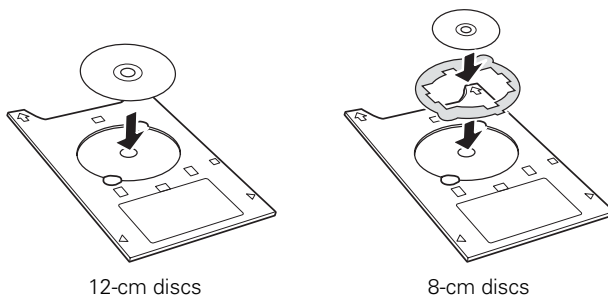
3. Open the front cover, then push the center of the manual feed tray to extend it.



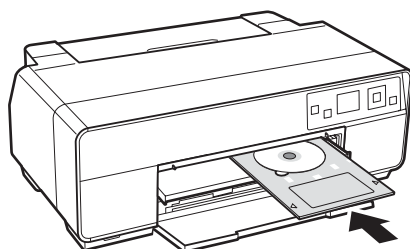
4. Place your disc on the included CD/DVD tray with the label side up.

**Note:**

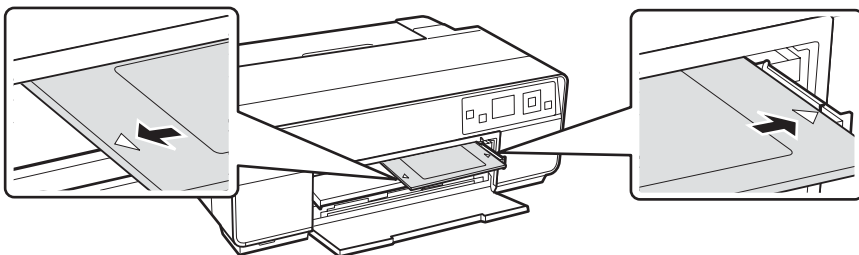
For small 8-cm discs, place the adapter on the tray and then place the disc in the adapter.



5. Place the CD/DVD tray on the manual feed tray.



6. Line up the arrows on the CD/DVD tray with the line on the manual feed tray. Make sure the CD/DVD tray is flush against the right.



7. Press the OK button. The CD/DVD tray loads inside the printer.

---

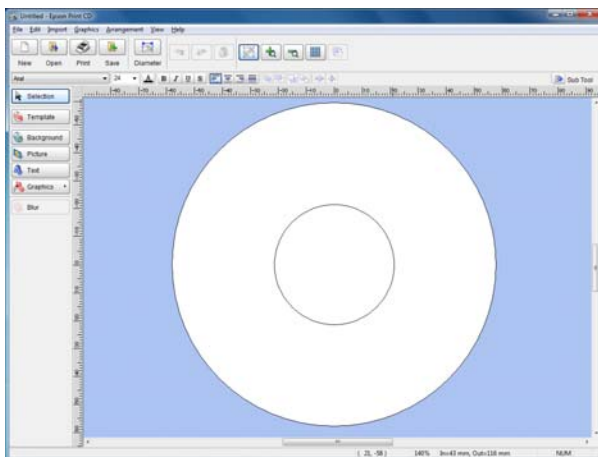
## Printing on a CD or DVD

When you installed the software for the R3000 Series, you installed the Epson Print CD program for printing label designs directly onto CDs or DVDs. Follow these steps to open the program and print on the disc you loaded in the printer:

1. Do one of the following to start Epson Print CD:

**Windows:** Double-click the **Print CD** icon on your desktop.

**Mac OS X:** Open the **Applications** folder, open the **Epson Software** folder, open the **Print CD** folder, and double-click **Print CD**.



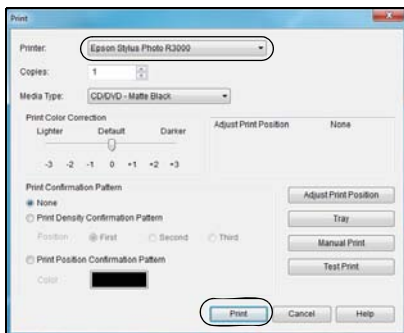


2. Follow the instructions in the online *User's Guide* to design your disc label. You can use the tools on the screen to add text and provided background designs, or add your own designs or photos.

**Note:**

If you're using discs whose printable area extends to within 0.16 inch (4 mm) of the edge of the center hole, you may need to adjust the **Inner/Outer Diameter** setting in the **File** menu of the Epson Print CD software. See the program's Help utility for instructions.

3. When you're ready to print on the disc, open the **File** menu and select **Print**. You see one of these windows:



**Windows**



**Mac OS X**

4. Select your Epson printer, if necessary.
5. Click **Print**.

---

## Removing Your Printed CD/DVD

After your CD or DVD is printed, the tray ejects partially from the R3000 Series. Pull out the tray and remove the disc.

After printing, handle the printed CD or DVD carefully. You may need to wait up to 24 hours for the ink to dry fully before inserting it in a drive. Keep printed discs away from moisture and direct sunlight.

If you need to adjust the print position or print quality, see your online *User's Guide* for instructions.

If you notice lines or streaks on your CD or DVD, you may need to clean the rollers inside the printer. See “Cleaning the Rollers” on page 45.

# Maintaining Your Printer

Follow the steps in these sections to keep the R3000 Series working at its best:

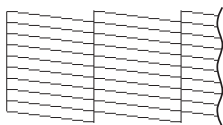
- “Checking and Cleaning the Print Head” below
- “Checking and Aligning the Print Head” on page 37
- “Checking the Ink Cartridge Status” on page 37
- “Replacing Ink Cartridges” on page 39
- “Switching Black Ink Types” on page 43
- “Cleaning the Rollers” on page 45

---

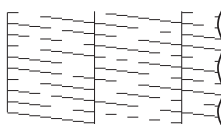
## Checking and Cleaning the Print Head

If your printouts are faint or have gaps in them, some of the nozzles in the print head may be clogged or ink may be running low in one or more of the ink cartridges. Follow the steps below to check the print head nozzles.

1. Load a few sheets of plain paper.
2. Press **OK** to open the menu screen.
3. Select **Setup**, select **Maintenance**, then select **Nozzle Check**.
4. Press **OK** to print a nozzle check pattern.
5. Check the nozzle check pattern that prints to see if there are gaps in the lines.



Nozzles are clean



Nozzles need cleaning

6. If there are no gaps, the print head is clean. Select **Finish Nozzle Check** to continue printing.

If there are gaps or the pattern is faint, select **Head Cleaning** (see page 36).

# Cleaning the Print Head

If print quality has declined and the nozzle check indicates clogged nozzles, you can clean the print head. Print head cleaning uses ink, so clean it only if necessary.

## Note:

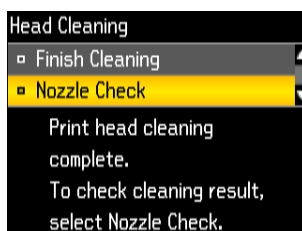
You cannot clean the print head if an ink cartridge is expended, and may not be able to clean it when a cartridge is low. You must replace the cartridge first (see page 39).

1. Load a few sheets of plain paper.
2. Press **OK** to open the menu screen.
3. Select **Setup**, select **Maintenance**, then select **Head Cleaning**.
4. Press **OK**.

Cleaning lasts around 2 minutes. When it's finished, you see a message on the LCD screen.

## Caution:

Never turn off the product during head cleaning or you may damage it.



5. Select **Nozzle Check** to confirm that the print head is clean.

## Note:

If you don't see any improvement after cleaning the print head four times, leave the product on and wait at least six hours to let any dried ink soften. Then try cleaning the print head again. If quality does not improve, one of the ink cartridges may need to be replaced. If that doesn't help, contact Epson as described on page 61.

If you do not use your product often, it is a good idea to print a few pages at least once a month to maintain good print quality.

---

# Checking and Aligning the Print Head


If your printouts become grainy or blurry, or you see dark or light bands across them, you may need to align the print head.

**Note:**

Banding may also occur if your print head nozzles need cleaning (see page 35).

1. Load a few sheets of Epson Presentation Paper Matte (or the photo paper you have on hand) in the sheet feeder (see page 6). It's best to use matte or photo paper for the most accurate alignment.

2. Do one of the following:

**Windows:** Right-click the  icon in the bottom right corner of your screen (the taskbar) and select **Print Head Alignment**.

**Mac OS X:** Open the **Applications** folder, open the **Epson Software** folder, and open **EPSON Printer Utility 4**. Select your printer, if necessary, then select **Print Head Alignment**.

3. Follow the online instructions to print the alignment check patterns and align the print head as necessary.

---

# Checking the Ink Cartridge Status

Your R3000 Series will let you know when an ink cartridge is low or expended in the following ways:

- The  $\Delta$  ink light flashes when ink is low in one or more cartridges.
- The  $\Delta$  ink light stays on when an ink cartridge is expended. You cannot print when an ink cartridge is expended even if the other cartridges are not expended. Replace any expended cartridges before printing.
- Your computer screen displays a message when you try to print. This window can optionally display ink offers and other updates retrieved from an Epson website.

**Tip:**


It's a good idea to check the ink status and replace cartridges, if necessary, before printing a large print job. If you need to replace a cartridge while printing, you can continue to print but you might notice a color difference depending on drying conditions.

**Note:**

On a Windows computer that is connected to the Internet, you may see a screen asking if you want to receive Epson offers the first time you try to print when ink is low. Click **Accept** or **Decline**. To disable checking for ink offers or updates from Epson, see the instructions in your online *User's Guide*.

To check the ink cartridge status at any time, do one of the following:

**Windows:**

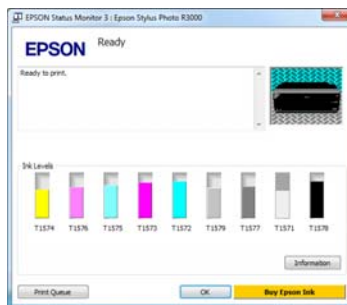
Double-click the  icon in the bottom right corner of your screen (the taskbar).

You see the screen to the right.

**Mac OS X:**

1. Open the Applications folder, then open the Epson Software folder.
2. Open EPSON Printer Utility 4.
3. Select your printer, if necessary, then select EPSON Status Monitor.

You see the screen to the right.



# Replacing Ink Cartridges

You can purchase genuine Epson ink and paper at Epson Supplies Central at [www.epson.com/ink3](http://www.epson.com/ink3) (U.S. sales) or [www.epson.ca](http://www.epson.ca) (Canadian sales). You can also purchase supplies from an Epson authorized reseller. To find the nearest one, call 800-GO-EPSON (800-463-7766).

Use the following list when you order or purchase new ink cartridges:

Ink color	Part number	Part number on software screens
Light Light Black	157	T1579
Vivid Light Magenta	157	T1576
Light Cyan	157	T1575
Light Black	157	T1577
Photo Black	157	T1571
Matte Black	157	T1578
Cyan	157	T1572
Vivid Magenta	157	T1573
Yellow	157	T1574

**Note:**

We recommend that you use genuine Epson cartridges and do not refill them. The use of other products may affect your print quality and could result in printer damage.

Yields vary considerably based on images printed, print settings, paper type, frequency of use, and temperature. For print quality, a small amount of ink remains in the cartridge after the “replace cartridge” indicator comes on. The printer ships with full cartridges and part of the ink from the first cartridges is used for priming the printer.

For best printing results, use up a cartridge within six months of opening the package.

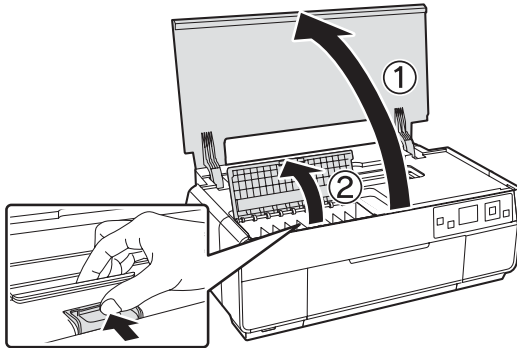
**Caution:**

Do not open ink cartridge packages until you are ready to install the ink. Cartridges are vacuum packed to maintain reliability.

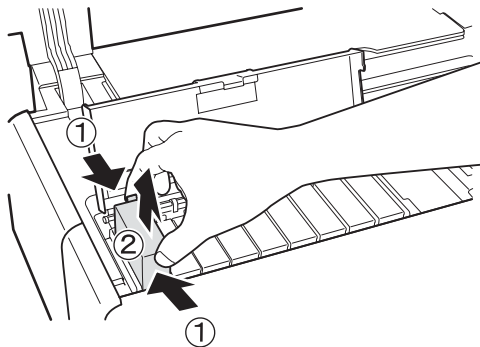
Leave your old cartridges in the R3000 Series until you are ready to replace them to prevent the print head nozzles from drying out.

Make sure you have a new ink cartridge before you begin. You must install new cartridges immediately after removing the old ones.

1. Open the printer cover, then open the ink cartridge cover.



2. Squeeze the tab on the cartridge and lift the cartridge straight up to remove it. Dispose of it carefully. Do not take the used cartridge apart or try to refill it.



**Warning:**

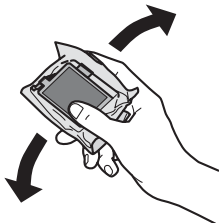
If ink gets on your hands, wash them thoroughly with soap and water. If ink gets into your eyes, flush them immediately with water. Keep ink cartridges out of the reach of children.



3. Before opening the cartridge package, shake the package four or five times.

**Note:**

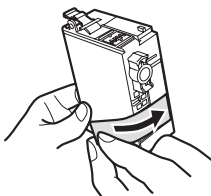
Cartridges make a clicking sound when you shake them.



**Caution:**

Do not shake the cartridges after opening the packages or ink will leak.

4. Remove the cartridge from the package, but be careful not to touch the green chip on the cartridge.
5. Remove the yellow tape from the bottom of the cartridge.

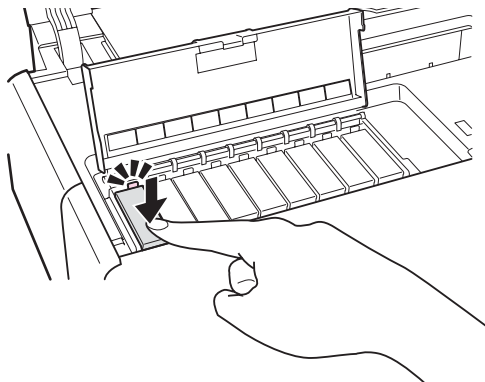


**Caution:**

Do not remove any other labels or seals, or ink will leak.



6. Insert the new cartridge into the holder and push it down until it clicks into place.



7. Close the cartridge cover, then close the printer cover.

Wait for the printer to check the ink cartridges and charge the ink delivery system, if necessary.

**Caution:**

Never turn off the R3000 Series while ink is charging or you'll waste ink.

If you remove a low or expended ink cartridge, you cannot reinstall and use the cartridge.

---

# Switching Black Ink Types

Your printer comes with Matte Black and Photo Black ink cartridges. Although both must be installed for the printer to work, the printer can use only one type of ink at a time. The printer will switch ink automatically, depending on the type of media you load. This consumes a certain amount of ink, so you should avoid switching ink more often than necessary.

To conserve ink, you can select the type of ink that is available by default (see page 44). First decide which type of media you usually print on. Then, if necessary, switch to the type of ink that works with that media.

The following media use **Matte Black** ink:

- Presentation Paper Matte
- Premium Presentation Paper Matte
- Epson Premium Presentation Paper Matte Double-sided
- Ultra Premium Presentation Paper Matte
- Velvet Fine Art Paper
- Watercolor Paper Radiant White
- UltraSmooth Fine Art Paper 325 gsm
- Exhibition Canvas Matte
- Photo Quality Self-adhesive Sheets
- PremierArt Matte Scrapbook Photo Paper for Epson
- Epson Hot Press Bright
- Epson Hot Press Natural
- Epson Cold Press Bright
- Epson Cold Press Natural

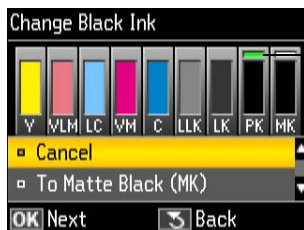
The following media use **Photo Black** ink:

- Photo Paper Glossy
- Premium Photo Paper Glossy
- Ultra Premium Photo Paper Glossy
- Premium Photo Paper Semi-gloss
- Ultra Premium Photo Paper Luster
- Exhibition Canvas Satin
- Exhibition Fiber Paper

## ***Select the Black Ink Type***

Switching black ink takes several minutes. Because it consumes some of the new type of ink, you should not switch ink more often than necessary.

1. Press **OK** to open the menu screen.
2. Press **OK** to select **Change Black Ink**. You see this screen:



Currently selected ink is indicated with a green bar

3. Press **▼** to select the type of ink the printer will switch to, then press **OK**.

---

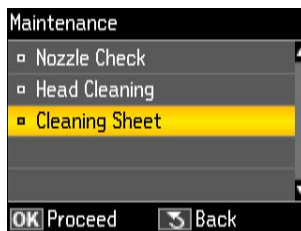
# Cleaning the Rollers

If you notice lines or streaks on your printouts, you may need to clean the rollers inside the printer by feeding several sheets of plain paper through it.

**Note:**

If paper dust builds up on the rollers, they may lose traction and become unable to feed paper properly. See your online *User's Guide* for cleaning instructions.

1. Turn on the printer.
2. Open the paper support and output tray.
3. Load several sheets of plain paper in the sheet feeder (see page 6).
4. Press **OK** to open the menu screen.
5. Select **Setup**, select **Maintenance**, then select **Cleaning Sheet**.



6. Press **OK** to feed a sheet of paper through the printer.
7. Feed several sheets of paper to completely clean the rollers. Select **Yes** to feed another sheet, or select **No** when you're finished and the paper comes out clean.

# Network Setup

Make sure you follow the instructions on the *Start Here* sheet to set up your product, choose your connection, and install the software. The online instructions during the installation process help you set up your network connection. Follow the instructions in this chapter only if you need additional help:

- For wireless network setup, see below.
- For wired network (Ethernet) setup, see page 54.

---

## Wireless Network Setup

The steps in this section provide detailed instructions for setting up your product on a wireless network.

You will need to install the software on every computer that will print to your product. Temporary use of a USB cable (not included) is recommended for the first installation only. After the product is connected to the network, you will be prompted to remove the USB cable.

If you are using Mac OS X 10.6 or don't have a USB cable, you can use the buttons on the product to select wireless settings instead.

**Note:**

If you have trouble setting up your product, see “Solving Problems” on page 57. You can also watch a video tutorial at: [www.epson.com/support/wireless](http://www.epson.com/support/wireless).

- If this is the first time that you're installing the product, see “Installing for the First Time” on page 47.
- If your product is already on your wireless network and you need to set up additional computers to print to the product, see “Setting Up Additional Computers” on page 52.

## Installing for the First Time

Before you begin, make sure that you have the following information ready and write it in the space provided below:

■ Network name (SSID): \_\_\_\_\_

■ Network password: \_\_\_\_\_

### Note:

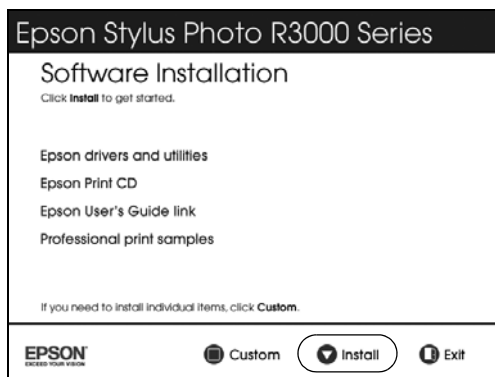
If your network password contains uppercase (ABC) or lowercase (abc) letters, be sure to note them correctly. If you don't know your network name (SSID) or network password, contact the person who set up your wireless network.

1. Make sure your product is turned on.
2. Insert the product software CD.
3. **Windows 7 and Windows Vista®:** If you see the AutoPlay window, click **Run Setup.exe**. When you see the User Account Control screen, click **Yes** or **Continue**.

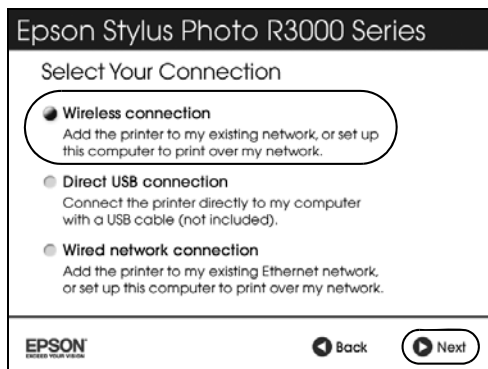
**Windows XP:** When you see the Software Installation screen, continue with step 4.

**Mac OS X:** Double-click the  **Epson** icon.

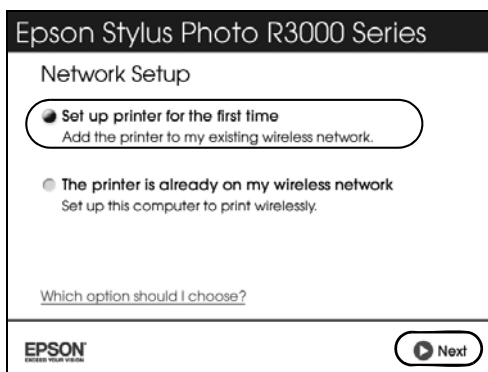
4. When you see this screen, click **Install**.



5. When you see this screen, select **Wireless connection** and click **Next**.



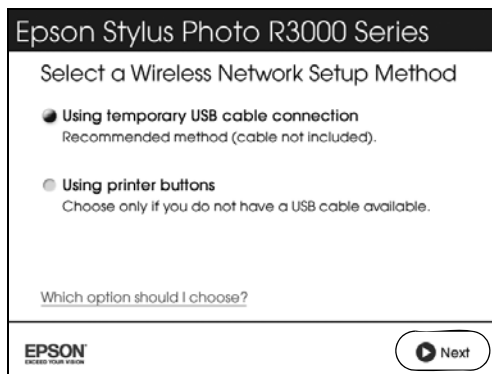
6. When you see this screen, select **Set up printer for the first time**, then click **Next**.



7. **Mac OS X 10.6:** At the next screen, click **Next**. Then skip to “Setting Up With the Printer Buttons” on page 50 to set up the product without using a temporary USB connection.



8. When you see this screen, select a wireless network setup method, then click **Next**.



**Tip:**

If you need help selecting a wireless network setup method, click **Which option should I choose** for more information on setup methods.

Do not connect the USB cable yet.

9. At the next screen, click **Next**.
10. Do one of the following:
- If you selected **Using temporary USB cable connection**, continue following the instructions on the screen.
  - If you selected **Using printer buttons**, continue with “Setting Up With the Printer Buttons” on page 50.

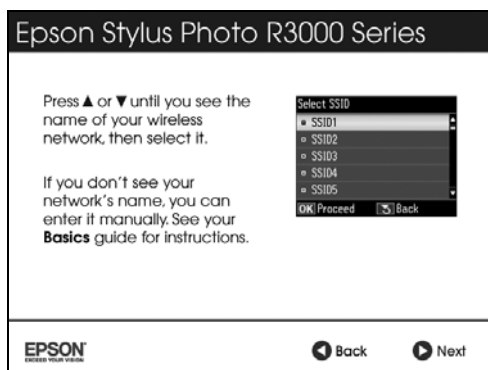
**Note:**

If you see a firewall alert message, click **Unblock** or **Allow** to let EpsonNet Setup continue, then click **Next** if necessary. Do not select **Ask Me Later**, **Keep Blocking**, or **Block**.

## Setting Up With the Printer Buttons

If you are using Mac OS X 10.6, or you don't have a USB cable to set up the product on your wireless network, follow these steps to set it up using the printer buttons:

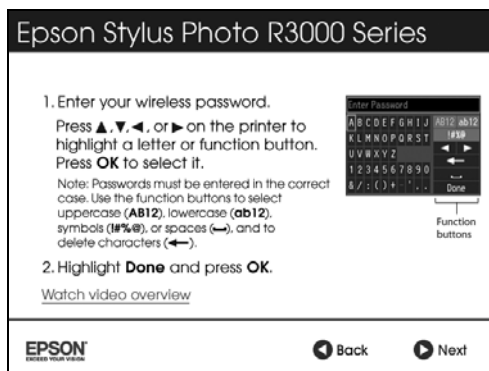
1. Follow the instructions on the screen to start the product's wireless Setup Wizard.
2. When you see this screen, use the printer buttons to select the name of your wireless network, then press **OK**. When you're finished, click **Next**.



If your network name isn't listed, try the following:

- Make sure that your wireless router or access point is turned on and working correctly. Press **↶** to return to the previous screen, press **OK** to select **Setup Wizard**, then repeat step 2.
- If you still can't find the network name in the list, your router or access point is not broadcasting its network name. Press **▲** or **▼** to select **Other SSIDs**, then press **OK**. Continue with the steps in "Entering Your SSID Manually" on page 52.

3. When you see this screen, do one of the following:



- If your wireless network has security enabled, use the printer buttons to enter your network password. If your password has uppercase (ABC) or lowercase (abc) letters, be sure to enter them correctly. Then go to step 4.
- If your wireless network doesn't have security enabled, continue with step 4.

**Note:**

If you're having trouble entering your network password, click **Watch video overview** to watch a short video tutorial on how to enter your network password.

4. Follow the online instructions to finish selecting network settings.

**Note:**

If you see a firewall alert message, click **Unblock** or **Allow** to let EpsonNet Setup continue and click **Next** if necessary. Do not select **Ask Me Later**, **Keep Blocking**, or **Block**.

If you see a network setup failed message, the network password may have been entered incorrectly. If your password has uppercase (ABC) or lowercase (abc) letters, or numbers (123), be sure to enter them correctly.

**Note:**

If the product still doesn't connect to your wireless network, see "Network setup failed" on page 60.

5. Wait while the software is installed, then follow the online instructions.
6. When installation is complete, remove the CD and restart your computer.

## Entering Your SSID Manually

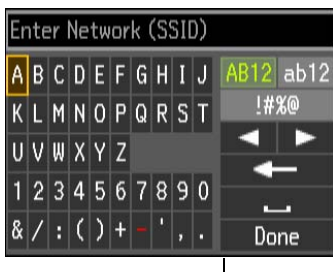
If your network doesn't broadcast its name (SSID), follow these steps to enter it:

1. From the Select SSID screen on the product control panel, press ▲ or ▼ to select **Other SSIDs**, then press **OK**.
2. Use the arrow buttons on the control panel to enter your network name. Press ▲, ▼, ◀, or ▶ to highlight a letter or function button on the screen (shown below), then press **OK** to select it.

Use the function buttons to select uppercase (**AB12**), lowercase (**ab12**), symbols (**!#%@**), or spaces (**\_**), and to delete characters (**←**).

### Important:

Network names are case-sensitive. Be sure to enter uppercase letters (**ABC**) or lowercase letters (**abc**) correctly.




Function buttons

3. When you're done entering your network name, highlight **Done** and press **OK**.
4. Continue with step 3 on page 51 to enter your network password.

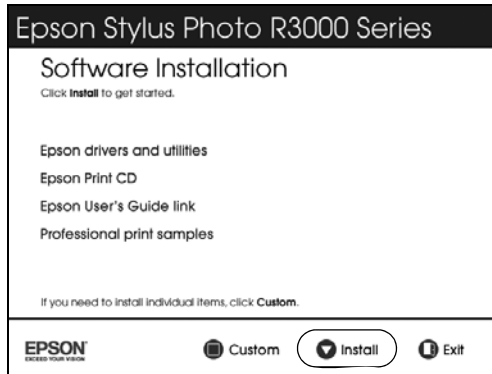
## Setting Up Additional Computers

1. Make sure your product is turned on.
2. Insert the product software CD.
3. **Windows 7 and Windows Vista:** If you see the AutoPlay window, click **Run Setup.exe**. When you see the User Account Control screen, click **Yes** or **Continue**.

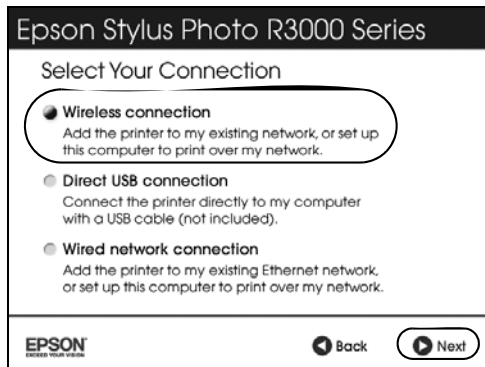
**Windows XP:** When you see the Software Installation screen, continue with step 4.

Mac OS X: Double-click the  Epson icon.

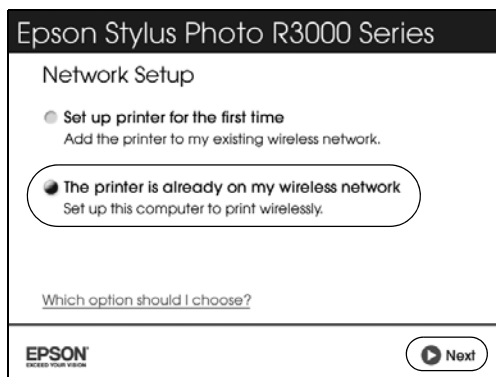
4. When you see this screen, click **Install**.



5. When you see this screen, select **Wireless connection** and click **Next**.



6. When you see this screen, select **The printer is already on my wireless network**, then click **Next**.



7. Wait while the software is installed.
8. Follow the instructions on the screen to install the rest of your software.
9. When installation is complete, remove the CD and restart your computer.

---

## Wired (Ethernet) Network Setup

The steps in this section provide detailed instructions for setting up your product on a wired (Ethernet) network.

### **Note:**

If you're having trouble setting up your product, see "Network Problems" on page 60.

1. Make sure your product is turned on.

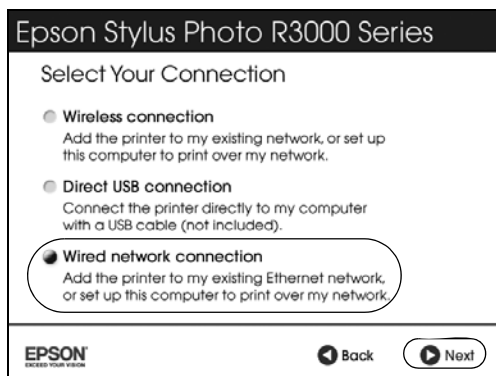
### **Note:**

If you previously set up the product on a wireless network, you must disable the wireless connection before you can connect to a wired network. Press **OK**, then select **Setup, Network Settings, Wireless LAN Setup, Disable Wireless LAN**. Select **Yes**, then press **OK**.

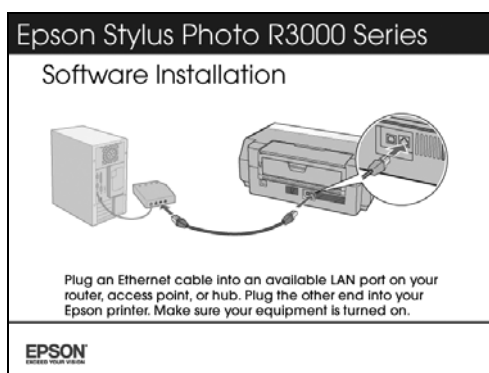
2. Insert the product software CD.
3. **Windows 7 and Windows Vista:** If you see the AutoPlay window, click **Run Setup.exe**. When you see the User Account Control screen, click **Yes** or **Continue**.

**Mac OS X:** Double-click the  **Epson** icon.

4. When you see the Software Installation screen, click **Install**.
5. When you see this screen, select **Wired network connection** and click **Next**.



6. When you see the Network Setup screen, do one of the following:
  - For a first-time installation, select **Set up printer for the first time**, then click **Next**.
  - If the printer has already been set up for network printing and you want to be able to print from an additional computer, choose **The printer is already on my Ethernet network**, then click **Next**.
7. **For first-time installation only:** Connect the product to your router, access point, or hub with an Ethernet network cable, then click **Next**.



8. **Mac OS X 10.6:** Skip to step 15.
9. Wait while the software is installed, then click **Next** to start network installation.

10. When you see the Firewall Warning screen, click **Next**.

**Note:**

If you see a firewall alert message, click **Unblock** or **Allow** to let EpsonNet Setup continue and click **Next** if necessary. Do not select **Ask Me Later**, **Keep Blocking**, or **Block**.

11. If you see a screen asking you to select a printer, select the product you would like to set up, then click **Next**.

12. Wait while EpsonNet Setup configures your product for the network.

13. If you see an Installation Complete screen that includes a **Print Test Page** button, click it to print a test page.

14. Click **Finish**.

15. Follow the instructions on the screen to install the rest of your software.

16. When installation is complete, remove the CD and restart your computer.



# Solving Problems


If you have a problem with your Epson product, check the messages on the LCD screen to diagnose the cause. You can also check the basic troubleshooting suggestions below or in your online *User's Guide*. The *User's Guide* provides detailed help and easy access to Epson's support website, FAQs, and paper and ink purchasing.

---

## Checking for Software Updates

Periodically, it's a good idea to check Epson's support website for free updates to your Epson Stylus Photo R3000 Series software. Open your online *User's Guide* and select **Download the Latest Software** or visit Epson's support website at [epson.com/support](http://epson.com/support) (U.S.) or [epson.ca/support](http://epson.ca/support) (Canada).



With Windows, you can select **Driver Update** on the **Utility** tab in the printer settings window. You can also click **Start** or , select **Programs** or **All Programs**, select **EPSON**, and click **Epson Stylus Photo R3000 Driver Update**.

---

## Problems and Solutions

Check the solutions below if you're having trouble using your printer.

### ***Printing Problems***

- Make sure your paper is loaded printable side up, short edge first, and all the way to the right (see page 6 and page 8).
- When using the sheet feeder, don't load paper above the arrow mark on the left edge guide.

- When using the manual feed tray, load only one sheet of compatible paper (see page 8).
- Make sure the paper size settings in the printer software are correct for the paper you loaded.

## ***Paper Feeding Problems***

- If paper doesn't feed into the sheet feeder, remove the paper and fan the stack of paper to separate the sheets. Reload paper against the right side and slide the edge guide against it. Do not load too many sheets in the sheet feeder at once (see page 6).
- If paper dust builds up on the rollers, they may lose traction and become unable to feed paper properly. See your online *User's Guide* for cleaning instructions.
- If you can't insert paper easily into the manual feed tray, make sure the paper is perfectly flat and not curled.
- Make sure the manual feed tray is not extended if you're printing on roll paper or with the sheet feeder. Extend it only to load fine art paper or poster board. Once the media is fed into the printer and you see a message on the screen, close the manual feed tray.
- If roll paper doesn't feed, cut the end of it straight across and uncurl the end by rolling it backward, if necessary. Then reload the paper (see page 11).
- If thick media doesn't feed, make sure you're loading it straight into the printer and not at an incline (see page 14).
- If paper is jammed, try the following, depending on how you're printing:

**Sheet feeder:** Open the printer cover and remove any paper jammed inside. Press OK to clear the error.

**Roll paper slot:** Cut off any printed roll paper and then cut the paper close to the roll. Gently pull out the paper from the front or back (whichever is easier) and press OK to clear the error.

**Manual feed tray:** Gently pull out the paper from the front or back (whichever is easier) and press OK to clear the error.

If you still see an error message, turn off the printer and then turn it back on.

## ***CD/DVD Printing Problems***

- If the CD/DVD tray won't load or jams in the printer, gently pull out the CD/DVD tray and press OK. Reload the CD/DVD tray, making sure to insert the tray correctly in the tray guide and align the arrows (see page 32).
- If your image is not positioned correctly on the disc or does not cover the printable area correctly, you may need to adjust the printing position using the Epson Print CD software. See the online *User's Guide* for instructions.
- If ink smears on your disc, make sure you're printing on ink jet-printable CDs or DVDs and that the surface of the disc is dry. Handle printed discs carefully and let them dry for 24 hours before inserting them in a drive. If necessary, you can adjust the print quality using Epson Print CD software. See the on-screen *User's Guide* for instructions.

## ***Print Quality Problems***

- For the best print quality, use Epson papers (see page 16) and genuine Epson ink cartridges (see page 39).
- Load the paper printable side up (usually the whiter, brighter, or glossy side).
- Make sure your paper isn't damp or curled.
- Some papers can only be loaded one sheet at a time (see page 6).
- Make sure the type of paper you loaded matches the paper size and paper type settings in your printer software (see page 28).
- Remove sheets from the output tray as they eject. Let your prints dry separately for at least 12 hours before framing or placing in a protective sheet. If you need to stack them, place a sheet of plain paper between each print.
- If you notice light or dark bands across your printouts or they are too faint, you may need to clean the print head. Run a nozzle check and clean the print head if necessary (see page 35).
- If you notice jagged vertical lines, run the print head alignment utility to check and align the print head (see page 37).
- The ink cartridges may be low on ink. Check cartridge status (see page 37) and replace cartridges if necessary (see page 39).

## ***Network Problems***

If you have a poor wireless connection, try moving the product to a different location. Avoid placing it next to a microwave oven, 2.4 GHz cordless phone, or large metal object such as a filing cabinet.

### **Note:**

For optimal print speed, your wireless router and/or laptop must conform to the 802.11n standard. Earlier standards (802.11a/b/g) are not supported.

### ***Network setup failed***

- Try moving the product to a different location.
- Make sure there aren't any access restrictions (such as MAC address filtering) set on the wireless router. If access restrictions are set, register the product's MAC address on the router. Print a Network Status Sheet (see below) to obtain the MAC address. Then see your router's manual for instructions.
- If your wireless router doesn't broadcast its network name (SSID), see page 52 for instructions on manually entering your wireless network name.
- If your wireless router has security enabled, make sure you entered the WEP key or WPA passphrase correctly.
- Remove and reinsert the CD to reinstall your product software. (See page 46 if you need detailed instructions.)

### ***The WiFi icon appears on the LCD screen but you cannot print***

- Make sure your firewall or security software is not set to block port 3690 (TCP/UDP). Contact your firewall manufacturer for assistance.
- Your router might not be assigning IP addresses automatically using DHCP. If it isn't, you will need to set the product's IP address manually. Make sure it is set correctly for your network.

### ***Print a Network Status Sheet***

1. Press OK to open the menu screen, then press ◀ or ▶ and select **Setup**.
2. Press ▲ or ▼ and select **Network Settings**.
3. Press ▲ or ▼ and select **Confirm Network Settings**.
4. Press OK to print the status sheet.

---

# Where to Get Help

## ***Epson Technical Support***

### **Internet Support**

Visit Epson's support website at [epson.com/support](http://epson.com/support) (U.S.) or [epson.ca/support](http://epson.ca/support) (Canada) and select your product for solutions to common problems. You can download drivers and documentation, get FAQs and troubleshooting advice, or e-mail Epson with your questions.

### **Speak to a Support Representative**

Before you call Epson for support, please have the following information ready:

- Product name (Epson Stylus Photo R3000 Series)
- Product serial number (located on the label in back)
- Proof of purchase (such as a store receipt) and date of purchase
- Computer configuration
- Description of the problem

Then call:

(562) 276-7272 (U.S.) or (905) 709-2567 (Canada), 6 AM to 8 PM, Pacific Time, Monday through Friday, and 7 AM to 4 PM, Saturday

Days and hours of support are subject to change without notice. Toll or long distance charges may apply.

## ***Purchase Supplies and Accessories***



You can purchase genuine Epson ink and paper at Epson Supplies Central at [www.epson.com/ink3](http://www.epson.com/ink3) (U.S. sales) or [www.epson.ca](http://www.epson.ca) (Canadian sales). You can also purchase supplies from an Epson authorized reseller. To find the nearest one, call 800-GO-EPSON (800-463-7766).

# Notices

---

## Important Safety Instructions

Before using your R3000 Series, read and follow these safety instructions:

- Be sure to follow all warnings and instructions marked on the R3000 Series.
- Use only the type of power source indicated on the R3000 Series label.
- Place the R3000 Series near a wall outlet where the plug can be easily unplugged.
- If you won't be using the R3000 Series for a long period, unplug the power cord from the electrical outlet.
- Always turn off the R3000 Series using the  power button, and wait until the  power light stops flashing before unplugging the printer or cutting off power to the electrical outlet.
- Avoid plugging the R3000 Series into an outlet on the same circuit as a photocopier or air control system that regularly switches on and off, or on an outlet controlled by a wall switch or timer.
- Do not let the power cord become damaged or frayed.
- If you use an extension cord with the R3000 Series, make sure the total ampere rating of the devices plugged into the extension cord does not exceed the cord's ampere rating. Also, make sure the total ampere rating of all devices plugged into the wall outlet does not exceed the wall outlet's ampere rating.
- Avoid locations that are subject to rapid changes in heat or humidity, shocks or vibrations, or dust.
- Leave enough room around the R3000 Series for sufficient ventilation. Do not block or cover openings in the R3000 Series case or insert objects through the slots.
- Do not place the R3000 Series near a radiator or heating vent or in direct sunlight.
- Do not use aerosol products that contain flammable gases inside or around the R3000 Series. Doing so may cause fire.
- Place the R3000 Series on a flat, stable surface that extends beyond its base in all directions. It will not operate properly if it is tilted or at an angle.
- Make sure the R3000 Series is at least 4 inches (10 cm) away from the wall.
- Do not touch the flat white cable inside the R3000 Series.
- Be careful not to spill liquid on the R3000 Series.

- Except as specifically explained in your documentation, do not attempt to service the R3000 Series yourself.
- Unplug the R3000 Series and refer servicing to qualified service personnel under the following conditions: if the power cord or plug is damaged; if liquid has entered the product; if the product has been dropped or the case damaged; if the product does not operate normally or exhibits a distinct change in performance. Adjust only those controls that are covered by the operating instructions.
- When storing or transporting the R3000 Series, do not tilt it, stand it on its side, or turn it upside down; otherwise ink may leak from the cartridges.

## ***Ink Cartridge Safety***

- Keep ink cartridges out of the reach of children and do not drink the ink.
- Be careful when you handle used ink cartridges; there may be ink remaining around the ink supply port. If ink gets on your skin, wash it off with soap and water. If it gets in your eyes, flush them immediately with water.
- Do not put your hand inside the R3000 Series or touch any cartridges during printing.
- Install a new ink cartridge immediately after removing an expended one. Leaving cartridges uninstalled can dry out the print head and may prevent the R3000 Series from printing.
- If you remove an ink cartridge for later use, protect the ink supply area from dirt and dust and store it in the same environment as the R3000 Series. Note that there is a valve in the ink supply port, making covers or plugs unnecessary, but care is needed to prevent the ink from staining items that the cartridge touches. Do not touch the ink cartridge ink supply port or surrounding area. Do not store the cartridge upside down.

## ***LCD Screen Safety***

- Use only a dry, soft cloth to clean the LCD screen. Do not use liquid or chemical cleansers.
- If the LCD screen is damaged, contact Epson. If the liquid crystal solution gets on your hands, wash them thoroughly with soap and water. If the liquid crystal solution gets into your eyes, flush them immediately with water. If discomfort or vision problems remain after a thorough flushing, see a doctor immediately.

## ***Wireless Network Safety***

- Do not use this product inside medical facilities or near medical equipment. Radio waves from the product may adversely affect the operation of medical equipment.
- Keep this product at least 9 inches (22 cm) away from cardiac pacemakers. Radio waves from this product may adversely affect their operation.
- Do not use this product near automatically controlled devices such as automatic doors or fire alarms. Radio waves from this product may adversely affect these devices.

---

## **Epson America, Inc., Limited Warranty**

**What Is Covered:** Epson America, Inc. (“Epson”) warrants to the original retail purchaser that the Epson printer covered by this limited warranty statement, if purchased and operated only in the United States, Canada, or Puerto Rico, will be free from defects in workmanship and materials for a period of one (1) year from the date of original purchase. For warranty service, you must provide proof of the date of original purchase.

**What Epson Will Do To Correct Problems:** Should your Epson printer prove defective during the warranty period, please call the Epson Connection at (562) 276-7272 (U.S.) or (905) 709-2567 (Canada) for warranty repair instructions and return authorization. An Epson service technician will provide telephone diagnostic service to determine whether the printer requires service. If service is needed, Epson will, at its option, exchange or repair the printer without charge for parts or labor. If Epson authorizes an exchange for the defective unit, Epson will ship a replacement printer to you, freight prepaid, so long as you use an address in the United States, Canada, or Puerto Rico. Shipments to other locations will be made freight collect. You are responsible for securely packaging the defective unit and returning it to Epson within five (5) working days of receipt of the replacement. Epson requires a debit or a credit card number to secure the cost of the replacement printer in the event that you fail to return the defective one. If Epson authorizes repair instead of exchange, Epson will direct you to send your printer to Epson or its authorized service center, where the printer will be repaired and sent back to you. You are responsible for packing the printer and for all costs to and from the Epson authorized service center. When warranty service involves the exchange of the printer or a part, the item replaced becomes Epson property. The replacement printer or part may be new or refurbished to the Epson standard of quality, and, at Epson's option, may be another model of like kind and quality. Exchange products and parts assume the remaining warranty period of your original product covered by this limited warranty.

**What This Warranty Does Not Cover:** This warranty covers only normal use in the United States, Canada, or Puerto Rico. Using this product for continuous production or similar high duty purposes is not considered normal use; damage, maintenance or service from such use will not be covered under this warranty. This warranty is not transferable.



This warranty does not cover any color change or fading of prints or reimbursement of materials or services required for reprinting. This warranty does not cover damage to the Epson product caused by parts or supplies not manufactured, distributed or certified by Epson. This warranty does not cover ribbons, ink cartridges or third party parts, components, or peripheral devices added to the Epson product after its shipment from Epson, e.g., dealer or user-added boards or components. Epson is not responsible for warranty service should the Epson label or logo or the rating label or serial number be removed or should the product fail to be properly maintained or fail to function properly as a result of misuse, abuse, improper installation, neglect, improper shipping, damage caused by disasters such as fire, flood, and lightning, improper electrical current, software problems, interaction with non-Epson products, or service other than by an Epson Authorized Servicer. If a claimed defect cannot be identified or reproduced, you will be held responsible for the costs incurred.

THE WARRANTY AND REMEDY PROVIDED ABOVE ARE EXCLUSIVE AND IN LIEU OF ALL OTHER EXPRESS OR IMPLIED WARRANTIES INCLUDING, BUT NOT LIMITED TO, THE IMPLIED WARRANTIES OF MERCHANTABILITY, NON-INFRINGEMENT OR FITNESS FOR A PARTICULAR PURPOSE. SOME LAWS DO NOT ALLOW THE EXCLUSION OF IMPLIED WARRANTIES. IF THESE LAWS APPLY, THEN ALL EXPRESS AND IMPLIED WARRANTIES ARE LIMITED TO THE WARRANTY PERIOD IDENTIFIED ABOVE. UNLESS STATED HEREIN, ANY STATEMENTS OR REPRESENTATIONS MADE BY ANY OTHER PERSON OR FIRM ARE VOID. IN NO EVENT SHALL EPSON OR ITS AFFILIATES BE LIABLE FOR ANY SPECIAL, INCIDENTAL OR CONSEQUENTIAL DAMAGES RESULTING FROM THE USE OR INABILITY TO USE THE EPSON PRODUCT, WHETHER RESULTING FROM BREACH OF WARRANTY OR ANY OTHER LEGAL THEORY. IN NO EVENT SHALL EPSON OR ITS AFFILIATES BE LIABLE FOR DAMAGES OF ANY KIND IN EXCESS OF THE ORIGINAL RETAIL PURCHASE PRICE OF THE PRODUCT.

In Canada, warranties include both warranties and conditions.

Some jurisdictions do not allow limitations on how long an implied warranty lasts, and some jurisdictions do not allow the exclusion or limitation of incidental or consequential damages, so the above limitations and exclusions may not apply to you. This warranty gives you specific legal rights and you may have other rights which vary from jurisdiction to jurisdiction.

To find the Epson Authorized Reseller nearest you, visit our website at:  
<http://www.epson.com>

To find the Epson Customer Care Center nearest you, visit  
<http://www.epson.com/support>

You can also write to:

Epson America, Inc., P.O. Box 93012, Long Beach, CA 90809-3012

---

# Declaration of Conformity

According to 47CFR, Part 2 and 15 for: Class B Personal Computers and Peripherals;  
and/or CPU Boards and Power Supplies used with Class B Personal Computers:

We: Epson America, Inc.  
Located at: MS 3-13  
3840 Kilroy Airport Way  
Long Beach, CA 90806  
Telephone: (562) 981-3840

Declare under sole responsibility that the product identified herein, complies with 47CFR Part 2 and 15 of the FCC rules as a Class B digital device. Each product marketed is identical to the representative unit tested and found to be compliant with the standards. Records maintained continue to reflect the equipment being produced can be expected to be within the variation accepted, due to quantity production and testing on a statistical basis as required by 47CFR §2.909. Operation is subject to the following two conditions: (1) this device may not cause harmful interference, and (2) this device must accept any interference received, including interference that may cause undesired operation.

Trade Name: Epson  
Type of Product: Ink jet printer  
Model: B471A

---

# FCC Compliance Statement

## ***For United States Users***

This equipment has been tested and found to comply with the limits for a Class B digital device, pursuant to Part 15 of the FCC Rules. These limits are designed to provide reasonable protection against harmful interference in a residential installation. This equipment generates, uses, and can radiate radio frequency energy and, if not installed and used in accordance with the instructions, may cause harmful interference to radio or television reception. However, there is no guarantee that interference will not occur in a particular installation. If this equipment does cause interference to radio and television reception, which can be determined by turning the equipment off and on, the user is encouraged to try to correct the interference by one or more of the following measures:

- Reorient or relocate the receiving antenna.
- Increase the separation between the equipment and receiver.
- Connect the equipment into an outlet on a circuit different from that to which the receiver is connected.
- Consult the dealer or an experienced radio/TV technician for help.

## ***WARNING***

The connection of a non-shielded equipment interface cable to this equipment will invalidate the FCC Certification of this device and may cause interference levels which exceed the limits established by the FCC for this equipment. It is the responsibility of the user to obtain and use a shielded equipment interface cable with this device. If this equipment has more than one interface connector, do not leave cables connected to unused interfaces. Changes or modifications not expressly approved by the manufacturer could void the user's authority to operate the equipment.

## ***For Canadian Users***

This Class B digital apparatus complies with Canadian ICES-003.

*Cet appareil numérique de la classe B est conforme à la norme NMB-003 du Canada.*

