

2-2. Disassembly & Reassembly Procedures [\(Click on the image to enlarge it.\)](#)

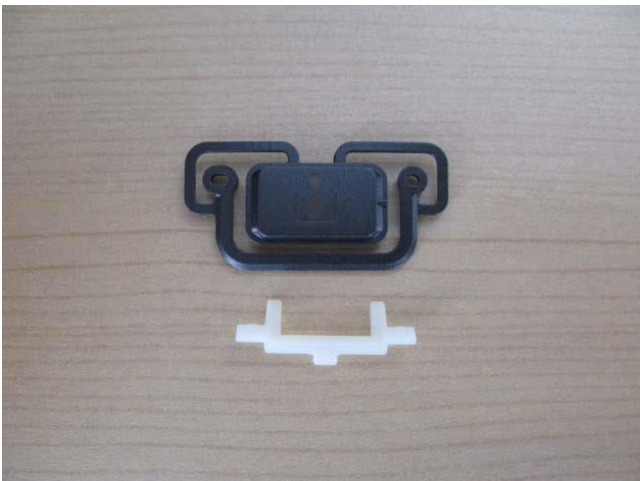
Be sure to protect the printer from static electricity in repair servicing, especially for the logic board, relay board, and PE sensor board.

(1) External housing removal



- 1) Remove the side covers (L and R) (no screws). < Release the claws on the top, then slide the cover down. >

When reassembling the printer, be cautious not to damage the claws (If they are damaged, the Tank Cover Open button will be hard to press).



< Detach the Tank Cover Open button and the tank cover switch lever. >

Be cautious not to lose or damage the button and lever.

2) Remove the main case (no screws). < Release the claws of the tank door units L and R (1 claw each), and



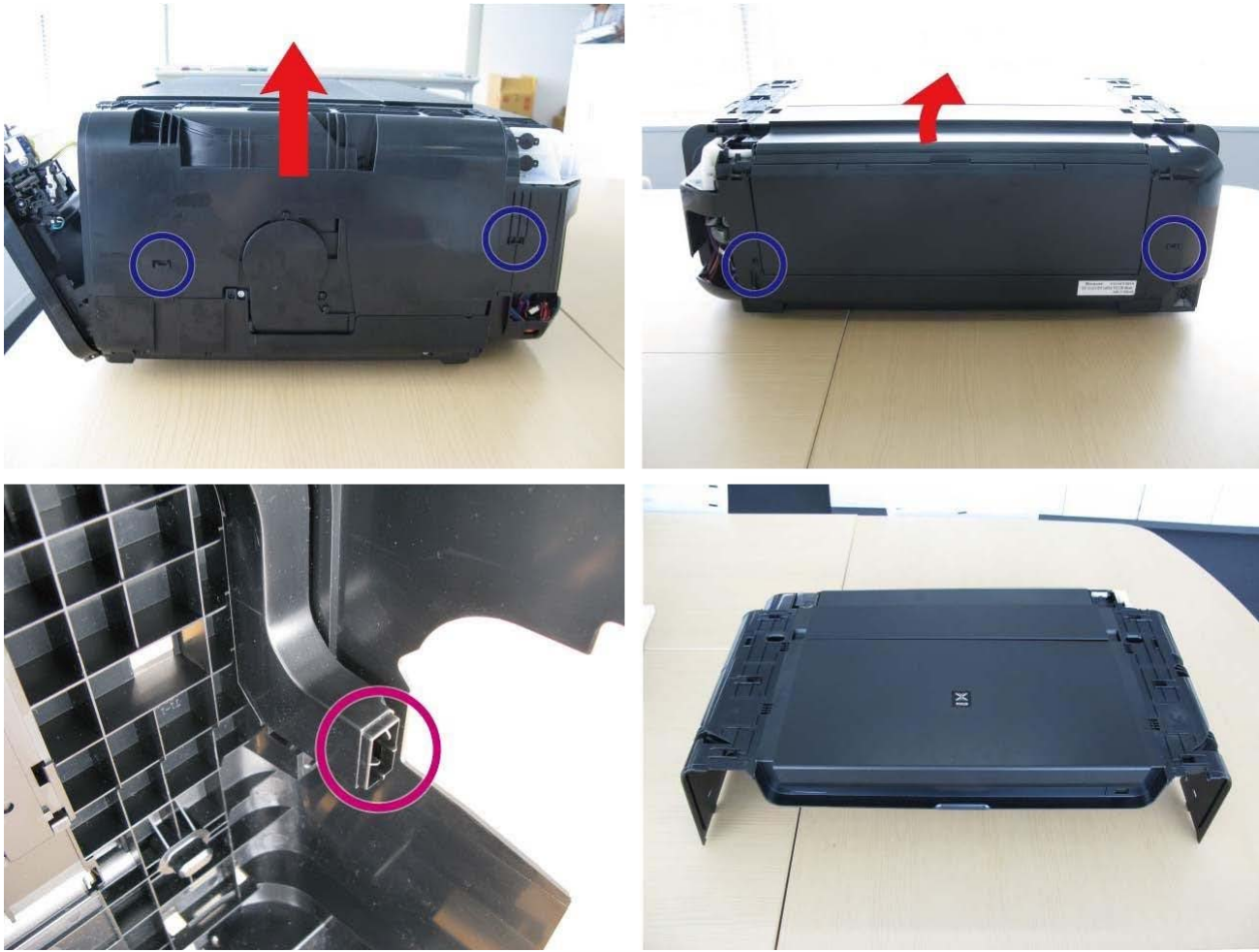
open the tank door unit. >

When replacing the tank door unit L, remove the RTC backup battery from the original unit and attach it to



the replaced new unit.

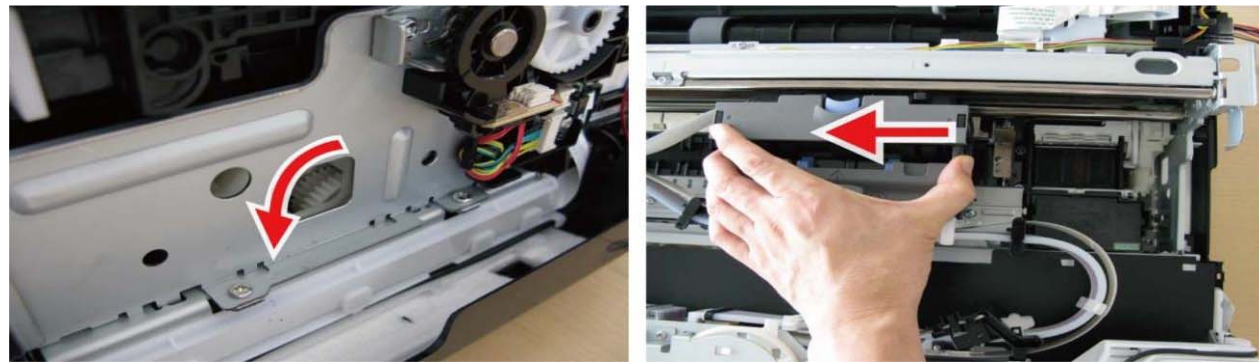
< Remove the rear covers L and R (6 claws). >



< Lift and detach the main case (6 claws in total). >

Note that ink may drop from the duct inside the main case in some instances.

Rotate the white gear Anti-clockwise to Free the print head locking Mechanism..



The Hat