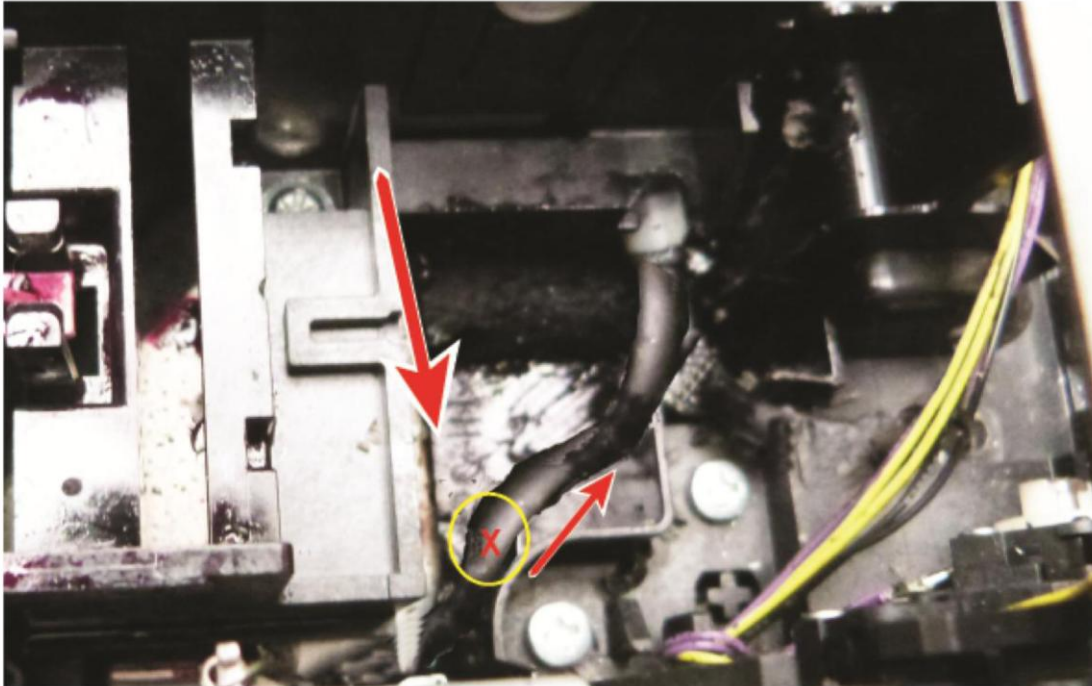
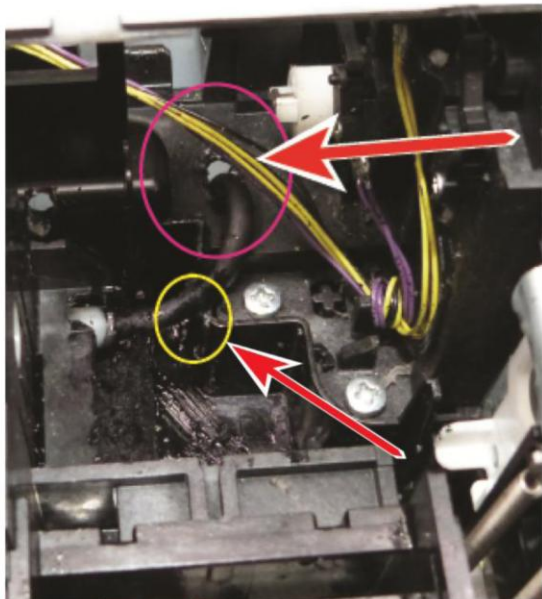


This is where you get a chance to look at the purge unit and pads but directly below the pads there is a black (Blade cleaner Unit box) If you examine this box closely you'll see two screws (Circled) they have to be removed to gain access to the purge unit waste pipe.

Next if you get hold of the bit of plastic sticking out on the right (Circled) with the right hand and using your left fingers under the wiper blade and your thumb on the lid lift the front of the box while jiggling it a bit and it will just pop out easy.



This picture shows the route that the waste pipe use to take before I pulled it out of that position.
If you grab the tube at X (Circled) with a pliers and pull it back then let it go,
just repeat this process until you've gotten the tube completely free.
It's a very slow process because the tube is about 30 cm long.

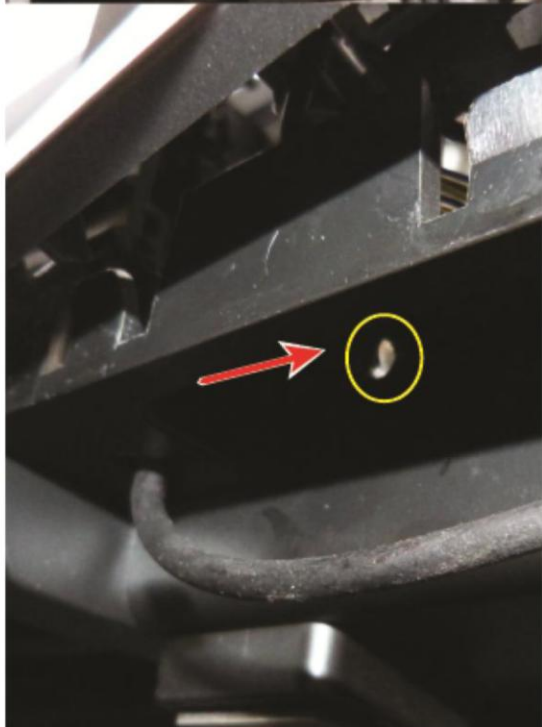


Once you get the waste pipe out all you have to do is to drill a hole in the bottom very near the front, I drilled two 6 mm holes side by side just to give a little bit of flexibility to the tube and to prevent it getting a kink in it where it makes the sharp turn to go out through the hole.

Once I've gotten it out through the hole I just put a piece of electrical tape on it to hold it and keep it firmly in place and when the front panel is fitted back into position the tubing is hidden from view in the front.

There is a little ridge here to stop the waste ink from moving out of the area which I trimmed a little to pass the tubing over but it's not really necessary (Circled in Yellow)

You can also see the first hole I drilled, which turned out not to be in the best place. (Circled in Yellow)

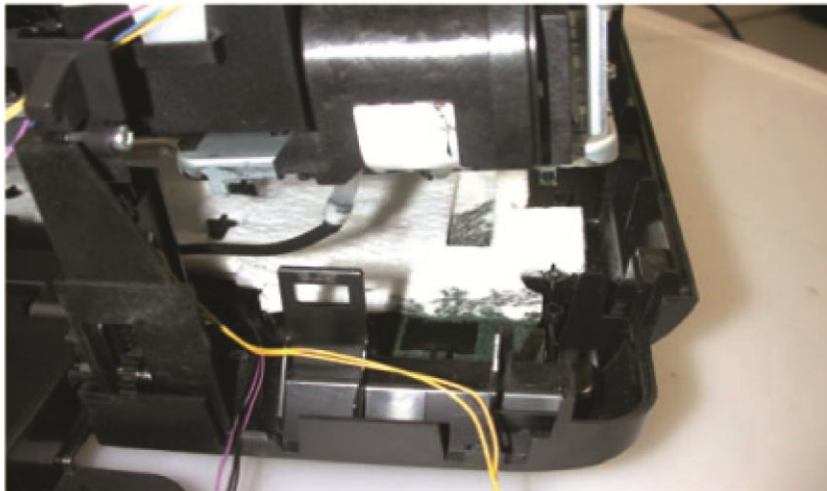


Putting it all back together again...

The first thing is to get the blade unit box back into position. This is accomplished by inserting the back of the box in at a steep angle first, be careful you don't get it caught on the front paper tray release catch on your left side.

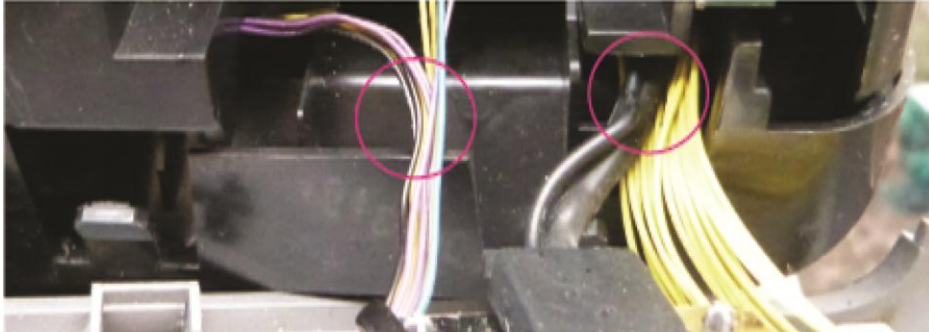
Once you get it partially in, the front part will be sticking up somewhat so by pushing on the very back of the box only (Top part) while holding your right index finger under the Blade and your thumb on the top, just press down very gently with a bit of pressure from your thumb all the while pushing the box mainly from the back.

The Blade box just snaps back into place and it's only a matter of putting the two screws back in again. If you have problems holding the screws in place just use the pliers again to steady them.



I included this picture just to show how and where the waste tube goes when it passes out of sight under the Platen.

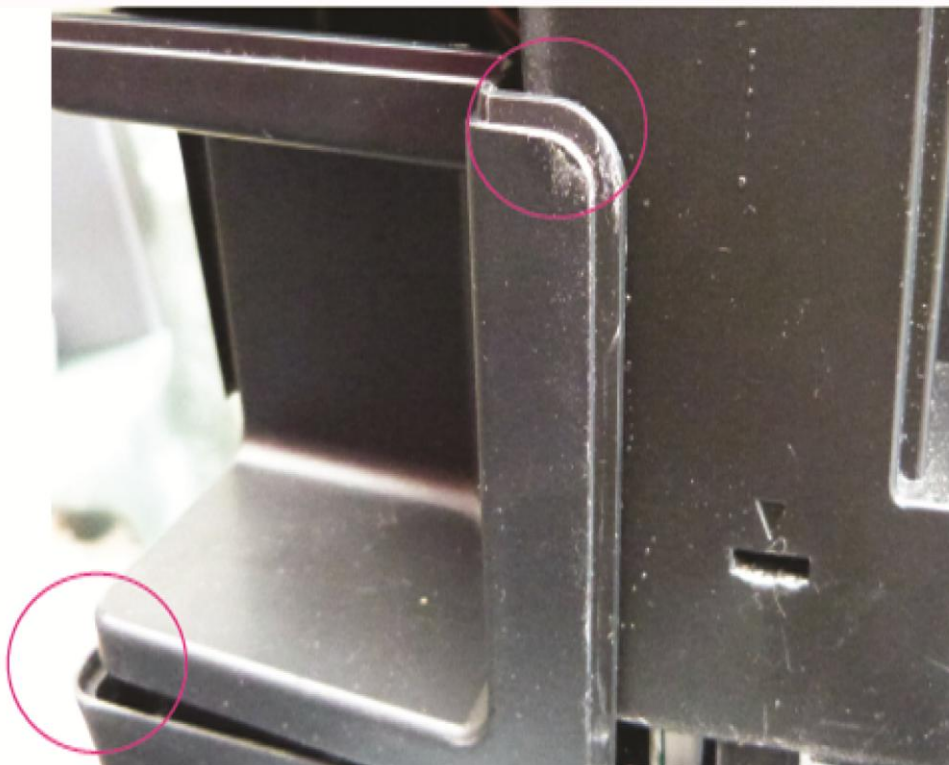
Now it's just a matter of putting the top cover back on again, this time make sure you keep the cover level all round when lowering it down, just to be sure you get a better fit that way.



There are a few things to watch out for

All though there is plenty of room at the front make sure you don't squash the wiring loom belonging to the front panel.

There's a small cover in front of the USB socket on the left side of the printer (BackView) that needs to be back in place before the top cover can be seated down properly and correctly.



Once you are sure that the top cover is fitted back in place properly (visual inspection) then slot the left and right side front panels onto the little clips (Circled) at the bottom of the case and then push downwards and shove home the top clips into the case.

All that's left to do now is to fit the two shoulder panels to both sides of the cover and the job is complete, one quick thump with your hand locks them back in place quickly.

Now to fit the all important potty to the waste pipe tubing, decide how long you want the black tubing to be and cut it to length and fit the new clear tubing to it, Now it time to test out your work.

