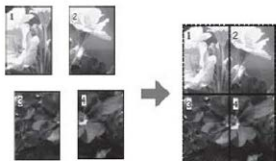


## Poster Printing (Windows only)

The poster printing function allows you to print poster-size images by enlarging one page to cover several sheets of paper. This function is supported by Windows only. You can make a poster or a calendar by joining the several printed sheets of paper together. Poster printing is available up to 16-fold of the normal printing (four sheets by four sheets.) The poster printing supports following two types.

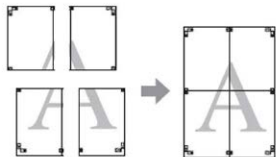
☐ Borderless poster printing

You can print a borderless poster-size image by automatically enlarging one page to cover several sheets of paper. You can make a poster just by joining the several printed sheets of paper together.



☐ Poster printing with margins

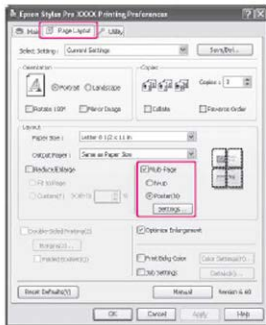
You can print a poster-size image by automatically enlarging one page to cover several sheets of paper. You need to cut the margins and then join the several sheets of paper together to make a poster.



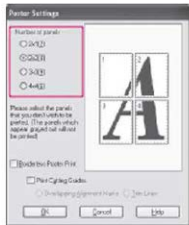
1. Prepare the print data by using an application.  
The printer driver automatically enlarges the image data during printing.
2. Open the printer driver window.

See “Accessing the Printer Driver” on page 11.

- Click the **Page Layout** tab, select the **Multi-Page** check box, select **Poster**, and then click **Settings**.



4. In the Poster Settings dialog box, select the number of printed pages you want the poster to cover.



**Note:**

*You can make a larger poster if you select a greater number for division.*

5. When you want to print a borderless poster, select the **Borderless Poster Print** check box, and select the panels that you do not want to print, and then click **OK**. Then go to step 6.



6. If you want margins around the poster, make sure the **Borderless Poster Print** check box is cleared, and make the other settings as necessary.



**Note:**

Regarding the size when the parts are joined together:

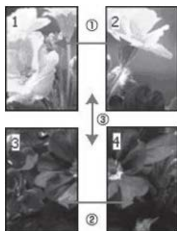
The finished size whether **Trim Lines** is selected or not is the same. However, if **Print Cutting Guides** is selected, the finished size is smaller by the amount of the overlap.

7. Check the other settings, and then start printing.

### ***For borderless poster printing***

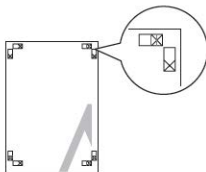
This section explains how to join the four printed pages together. Join the printed pages together appropriately, and stick them on the back of sheets using the cellophane tape. Join them by the following order indicated in the illustration below.

Borderless poster printing may not produce a set of complete partial images which can be used to assemble a poster. If you want a more complete poster, try the Poster printing with margins feature.

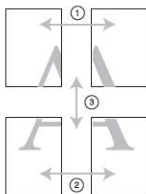


### ***For poster printing with margins***

When you select **Overlapping Alignment Marks**, the following marks are printed on the paper. See the procedures below to join the four printed pages together using the alignment marks.

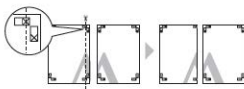


The four sheets are joined together by the following order.

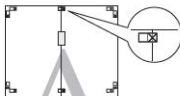


1. Cut the upper left sheet along the alignment mark (vertical blue line).

The guide is black for the black-and-white printing.

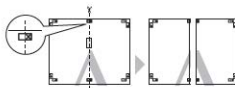


2. Lay the upper left sheet on top of the upper right sheet. The X marks should be matched as in the illustration below, and join the upper left sheet to the upper right sheet with cellophane tape temporarily.



3. Cut the upper sheets along the alignment mark (vertical red line).

The guide is black for the black-and-white printing.

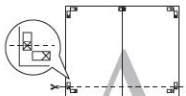


4. Join the upper left and right sheets together with cellophane tape on the back of the sheets.

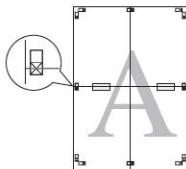


5. Try step 1 to 4 for the lower sheets.
6. Cut the bottom of upper sheets along the alignment mark (horizontal blue line).

The guide is black for the black-and-white printing.

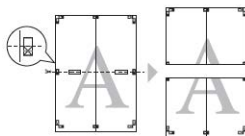


7. Lay the upper sheets on top of the lower sheets. The X marks should be matched as in the illustration below, and join the upper sheets and lower sheets together with cellophane tape temporarily.



8. Cut the sheets along the alignment mark (horizontal red line).

The guide is black for black-and-white printing.



9. Join the upper sheets and lower sheets together with cellophane tape on the back of the sheets.

