

3-2. Part Replacement Procedures (Click on the image to enlarge it.)

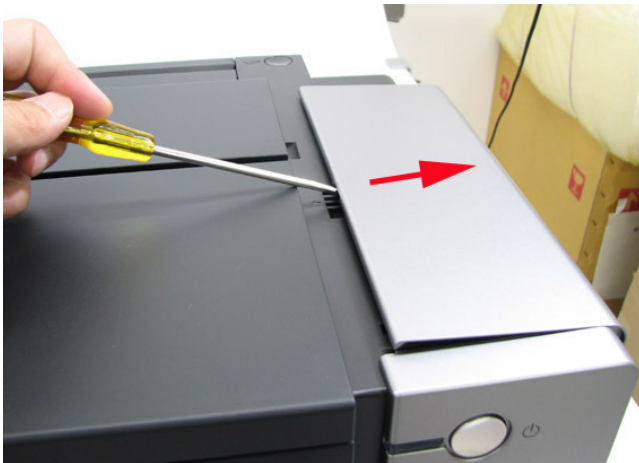
Be sure to protect the printer from static electricity in repair servicing, especially for the logic board and panel board.

(Photos of the Pro9000 Mark II are used in some steps.)

(1) External housing removal

1) Remove the side covers L and R. (no screw)

Release the tabs on the top, then slide the covers downward.



2) Remove the front covers L and R. (no screw)

Release the tabs at the top, then slide the covers upward.



3) Remove the main case. (no screw)

Release 2 tabs on the front, 1 tab from each side, and 2 tabs on the back (6 tabs in total).

