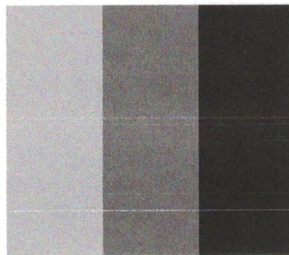
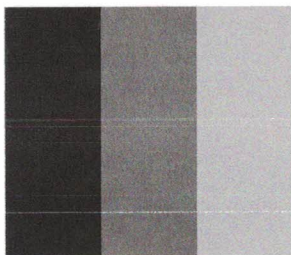



A B C D E F G H I J K L M N O P Q R S T U V W X Y Z



# HP OfficeJet Pro 7740 Wide Format All-in-One Series

## Print Quality Diagnostic Page

---

### Printer Information

Product model number: G5J38A

Product serial number: CN82M250HV

Service ID: 28123

Firmware Version: EDWINXPP1N002.1942A.00

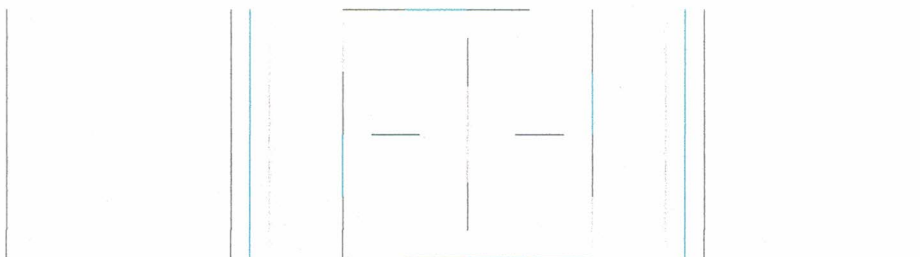
Pages printed: Tray 1=264, Tray 2=16, Total=280, Auto-duplex unit=6

Ink cartridge level\*: K=20, Y=70, M=80, C=70

\*Estimates only. Actual ink levels may vary.

### Test Pattern 1

If the lines are not straight and connected, align the printheads.



### Test Pattern 2

If you see thin white lines across any of the colored blocks, clean the printheads.

