



CANON 550/551 CARTRIDGE REFILL INSTRUCTIONS FOR CARTRIDGES WITH AUTO RESET CHIPS

**THE CARTRIDGES MUST BE INSTALLED AS A COMPLETE SET AND
NOT MIXED WITH OTHER CARTRIDGES**



Select a cartridge to fill.

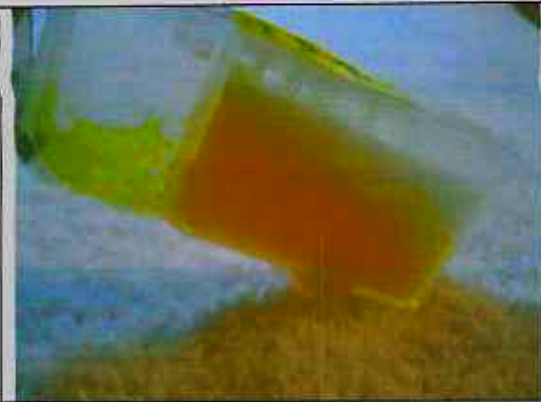


Start to remove the protective cover
by unclipping it as shown.



Pull the cover down.

	<p>Pull it off carefully and put it to one side.</p>
	<p>Assemble the syringe and needle set ensuring you keep you to not touch the sharp end of the needle. Always put the protective needle cover back on the needle after use and store the syringes carefully.</p> <p>Fill the syringe to about the 8ml mark as shown. There are numbers on the side of each syringe.</p>
	<p>Using the INK hole in the top of the cartridge. Insert the needle and start injecting the ink.</p>
	<p>Keep injecting the ink.</p>



Now tip it and check that the sponge is saturated fully.



The sponge is now fully saturated.

DO NOT FILL THE NON-SPONGE CHAMBER WITH INK. IF EXCESS INK APPEARS HERE JUST REMOVE IT BY PULLING BACK ON THE SYRINGE.



The rubber bung can now be fitted to the ink hole.

NEVER FIT A BUNG TO THE AIR HOLE OR THE CARTRIDGES WILL NOT WORK.

IF YOUR CARTRIDGES HAVE COME FILLED WITH INK YOU NEED TO REMOVE THE BUNG FROM THE AIR HOLE.



NEVER PUT THESE WASHERS UNDER THE CARTRIDGES UNLESS YOU HAVE REMOVED THE OLD WASHERS FROM YOUR PRINTER FIRST- OTHERWISE YOUR CARTRIDGES WILL NOT WORK!

ONLY REPLACE A WASHER IF IT IS DAMAGED - NORMALLY THESE WASHERS ARE NEVER USED.

Repeat the process for each cartridge knowing that the large black cartridge requires slightly more ink.

Remember the Large Black cartridge Takes the 550 Pigmented ink and the small black cartridges takes the 551 photo ink.

Once each cartridge is finished you should refer to your user manual and install the cartridges into your printer as instructed.

Your chips will automatically reset to 100% ONLY when the ink levels fall below around 20%.

If you have any queries please contact me on 07939-056-806 or sales@intelli-ink.co.uk