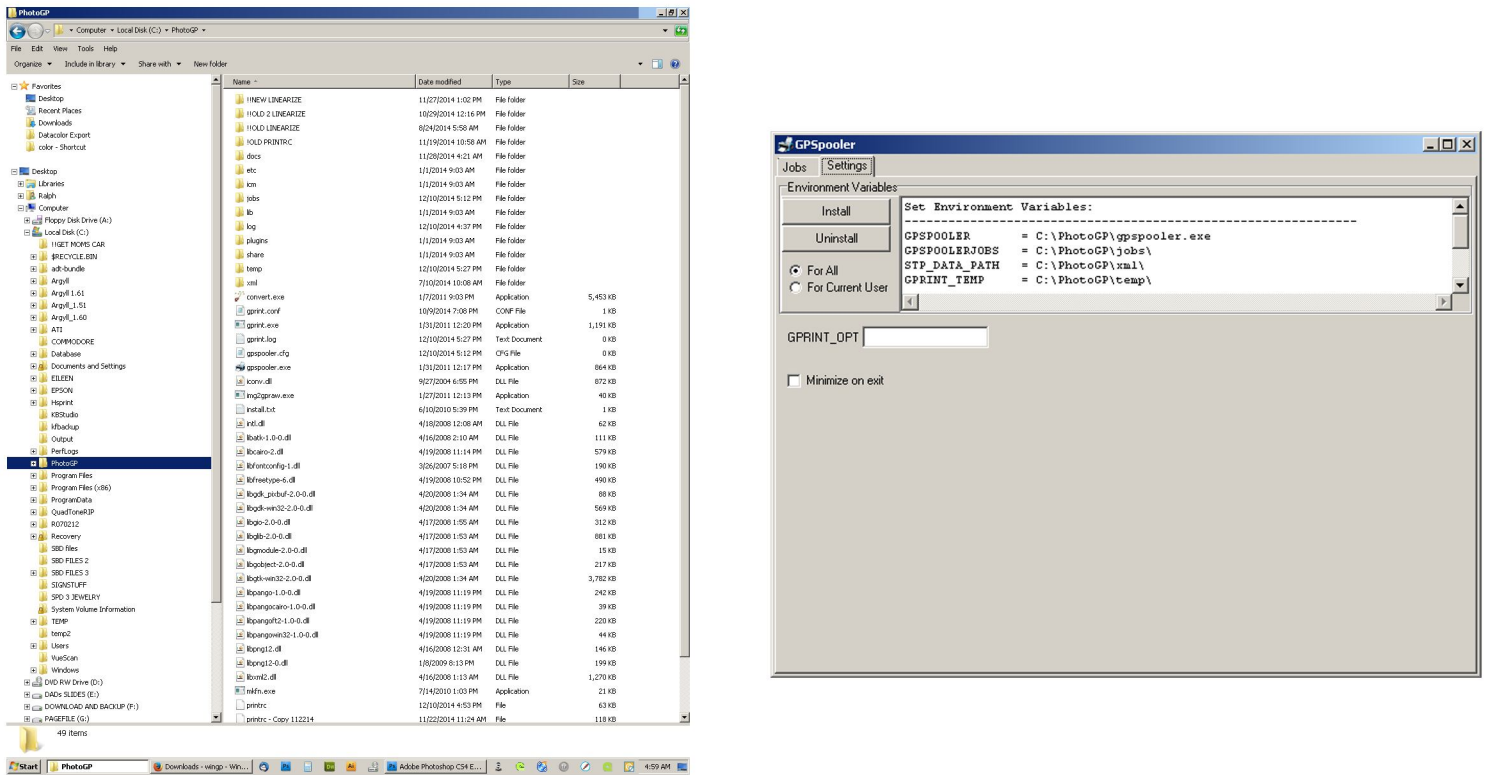


If you internet search “Wingp Google Code” you should find the download location. The latest version is “wingp\_5.2.6.2\_PrintAll\_ICM.zip”.

## INSTALLATION

Wingp does not get “installed” so to speak. You need to make a folder (I called it PhotoGP) on your C drive and extract the contents of “wingp\_5.2.6.2\_PrintAll\_ICM.zip” there.



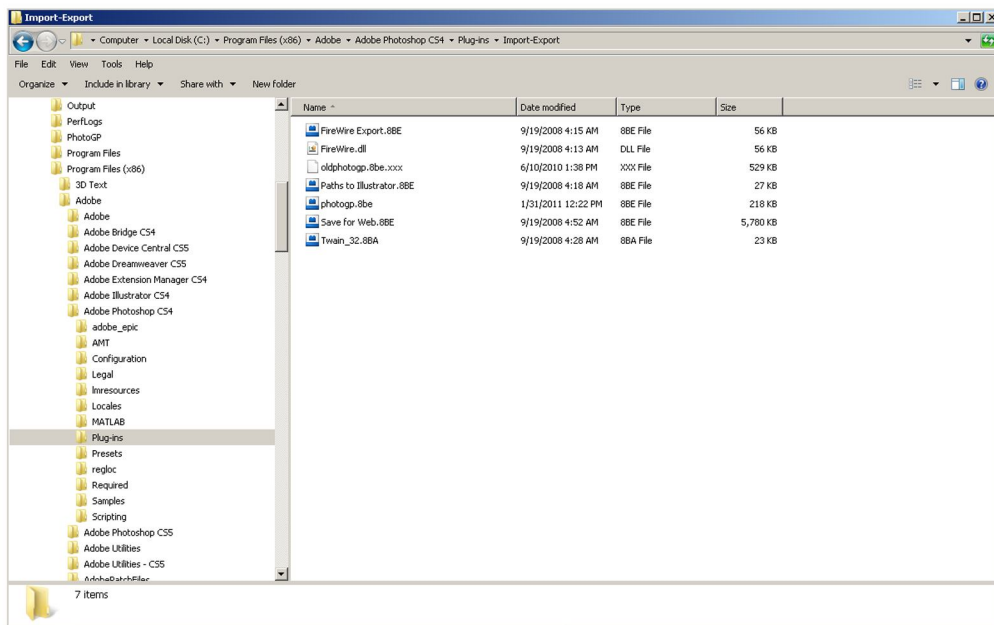
You will next have to set the “Environment Variable” or PATH reference so WinGP can find it’s associated files.

DOUBLE CLICK (launch) “gpspooler.exe”, select “Settings” and then click “Install”. Your environment path should now be set. You can verify this by locating at START/SETTINGS/CONTROL PANEL/SYSTEM/ADVANCED SYSTEM SETTINGS/ENVIRONMENT VARIABLES/ and look for the references in the bottom box.

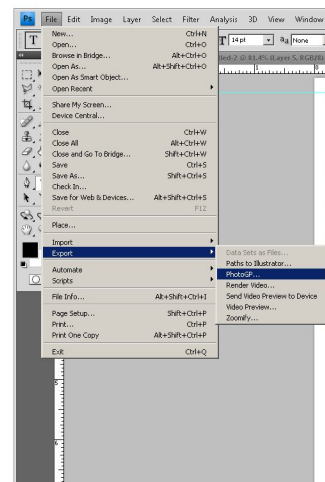
I would recommend copying the “doc” subfolder in the Gutenprint tarball to your new “installation” for future reference. You also need to replace the existing XML sub-folder in your new installation with the one provided in the Gutenprint tarball. All printer definitions are in these XML files and you will need the latest ones for the newer printers. The core driver hasn’t changed.

If you are going to do any editing of the XML files for customizing a printer, you should have an XML editor. This editor will present the XML files in a logical format and prevent the addition of any unwanted (unseen) characters along with maintaining the correct format when modifying and saving. I personally use “XML:WRENCH”. It’s free and very light weight.

Lastly, you will need to copy the plugin for using Wingp with Photoshop (32bit only). It is located in the “plugin” folder on your new installation. It’s name is “photogp.8be” and is copied to your PROGRAM FILES (x86)/ADOBE/PHOTOSHOP/PLUG-INS/IMPORT-EXPORT folder. All my file locations are for my installation on a Windows 7 computer. Your locations should be very similar.



When you want to print a Photoshop image that you have opened, it is done by selecting (in Photoshop) FILE/EXPORT/PHTOTGP, and that will bring up the “Gutenprint” GUI.



That should complete the “installation process. Next time, we will begin to discuss setting up a printer and some of the parameters.