

Printing the 7 x 10 Cards on Canon Pro 100

The cards are supplied in jpg format, sized to print 7 x 10, and are in the sRGB colour space.

Matching size envelopes are the North American A7 envelopes size 5¼ x 7¼.

This provides for very simple ink-jet printing.

OPTION ONE

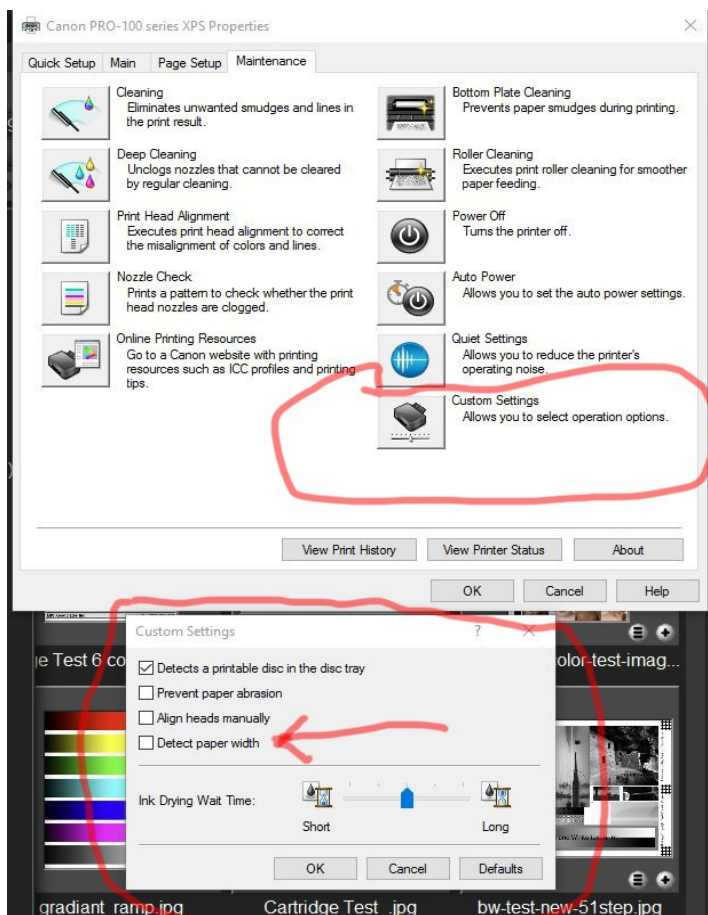
Print on letter size 8½ x 11, and then cut to final size 7 x 10.

This is the simplest but most cumbersome and probably only suited for a small quantity of cards.

OPTION TWO BASED ON PRINTING USING 7 x 10 SIZED CARDS on Canon Pro 100 or similar ink-jet printer. Should be able to adapt to most Canon ink-jet printers with similar driver interfaces.

1: From the canon Pro100 Driver click: MAINTENANCE MENU/CUSTOM SETTINGS

Make sure the DETECT PAPER WIDTH CHECK BOX is not selected – *As screen display below*



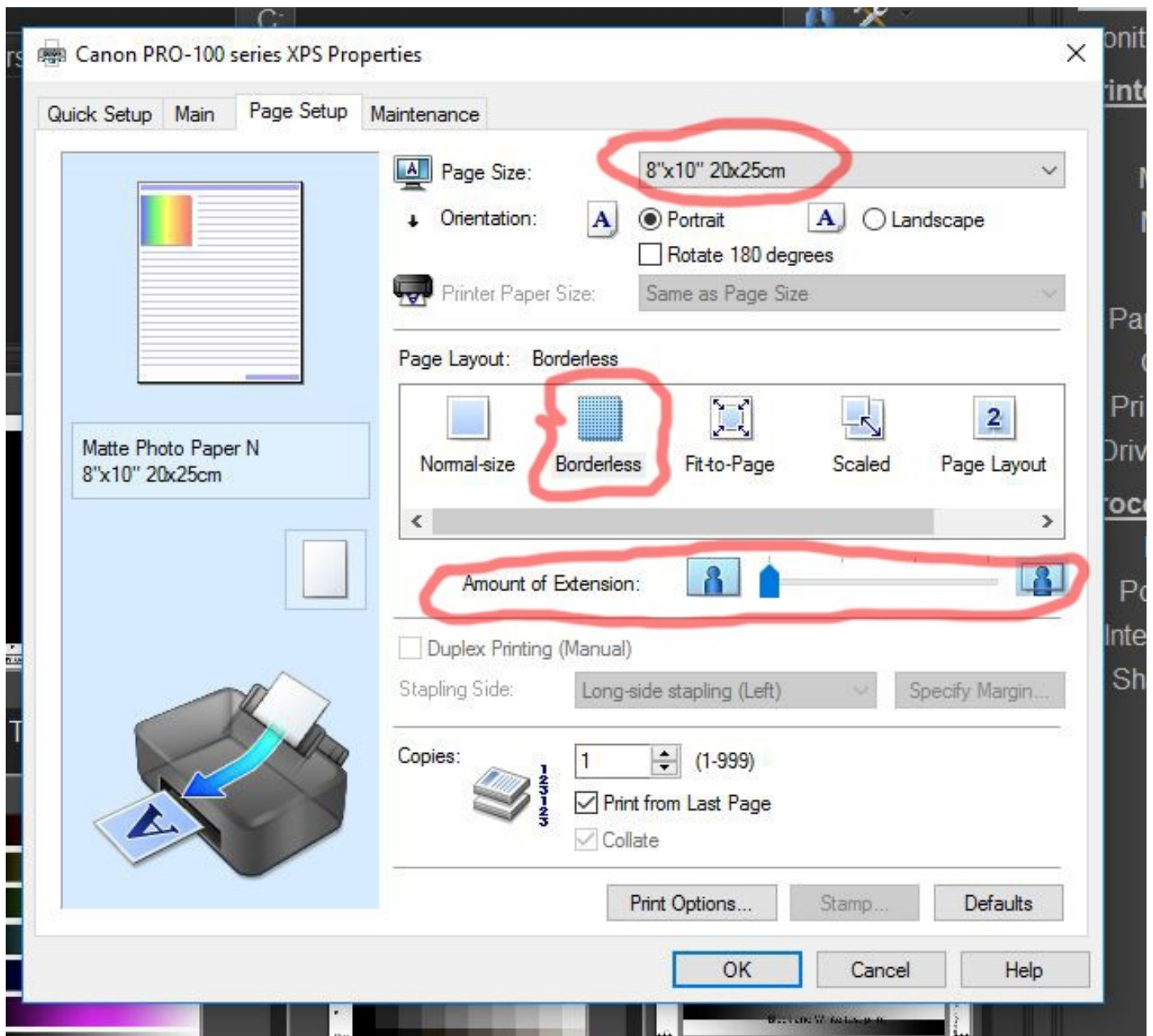
2: On the PAGE SETUP TAB

Make the following settings as illustrated below with red highlights

Set paper size to 8 x 10.

Select BORDERLESS

Make sure the "Amount of extension" is set to the left most position.



3: Load 7 x 10 cards in paper tray ready for printing.

Set all remaining controls including your paper profile to your setting of choice.

Using your post processing software of choice ensure a 7 x 10 sized portrait oriented image is sent to the print driver.

All that remains is to hit the print button and

ENJOY!!

FINAL COMMENTS:

Appropriate sized A7 cards and Envelopes can be purchased from:

<http://www.redrivercatalog.com/cardshop/>

I am sure there are other suppliers.

I also print these cards on my Epson 3880 but the setup is somewhat of a KLUDGE because of Epson's inflexibility setting border less configuration for this size card.

If anybody knows a simple 3880 setup I would like to hear of it.

I am aware that these sizes are not appropriate for metric users. If anybody is interested in a metric sized card send me a message with the metric size and I will resize the cards accordingly.