

## **FITTING A PRINTER POTTY TO THE CANON PRO 9500 MK2**



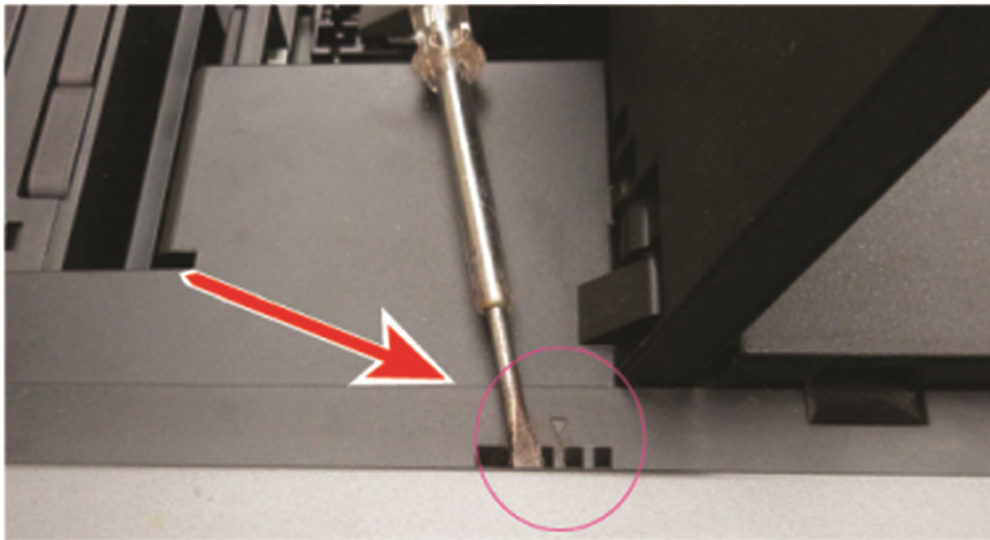
It would help enormously if you read through the instruction before setting out to install your printer potty.

Examine the pictures and indentify where all the release clips are located this will help you remove the main case cover a lot easier.

Now you're ready to start the installation.

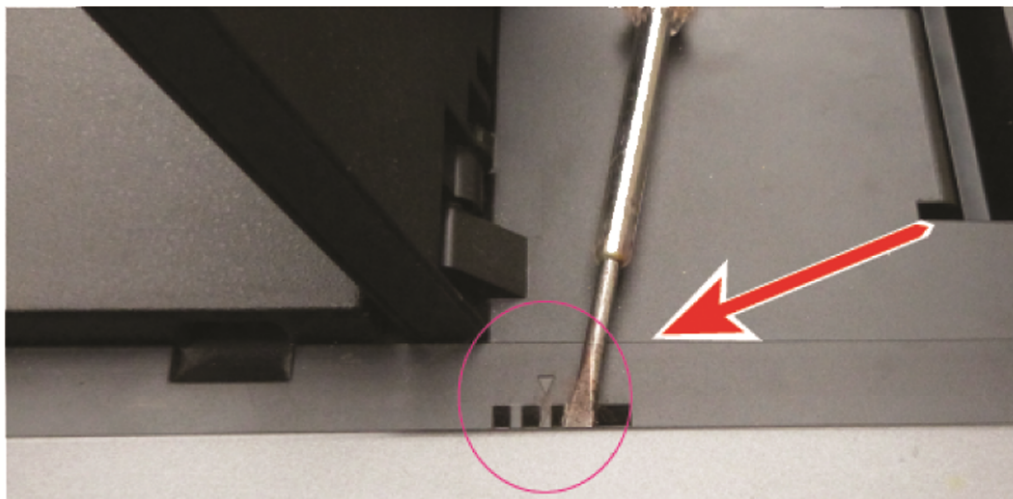
First turn on your Printer and open the top lid, this will bring the print head into position for cartridges change, remove all the cartridges and print head then pull the power plug.

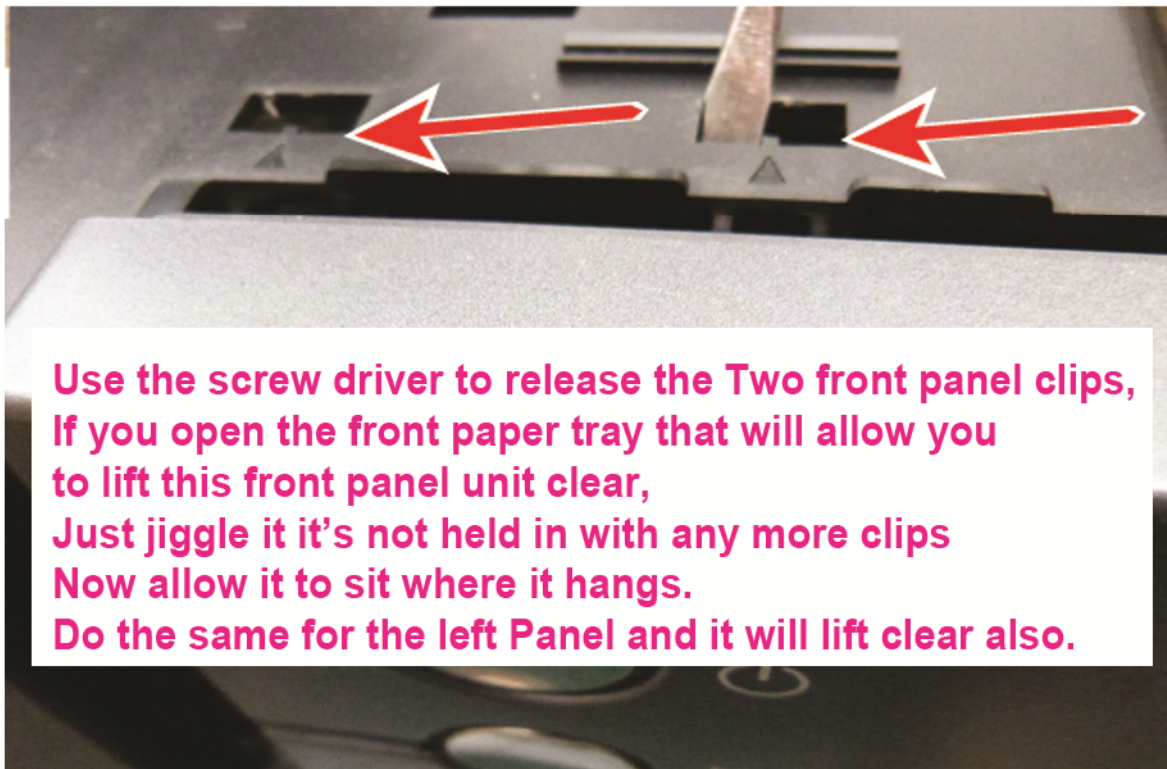
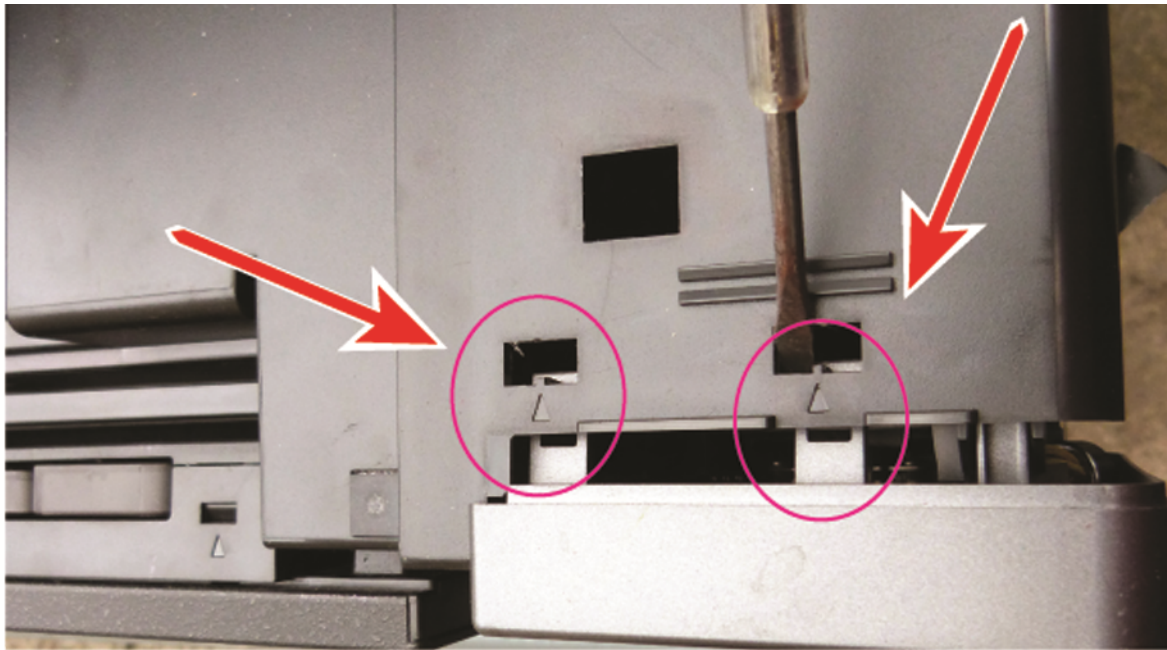
The first place to start is the Right side



First stick a flat head screw driver into the position indicated then lift gently and this shoulder cover will pop off.

Then the Left Side





Use the screw driver to release the Two front panel clips,  
If you open the front paper tray that will allow you  
to lift this front panel unit clear,  
Just jiggle it it's not held in with any more clips  
Now allow it to sit where it hangs.  
Do the same for the left Panel and it will lift clear also.

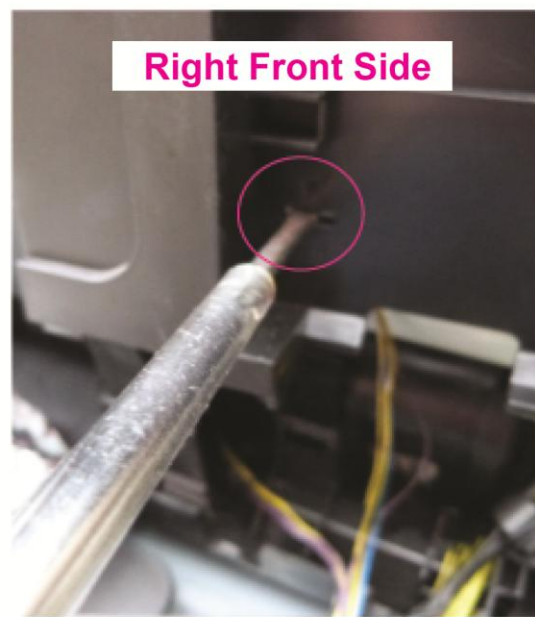


Now locate the clip holes one on either side of the printer  
there are also two on the back.

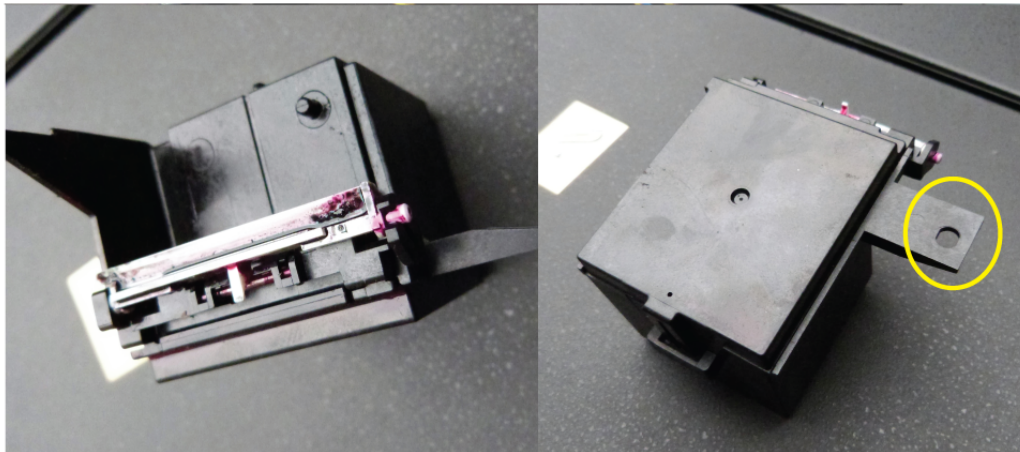
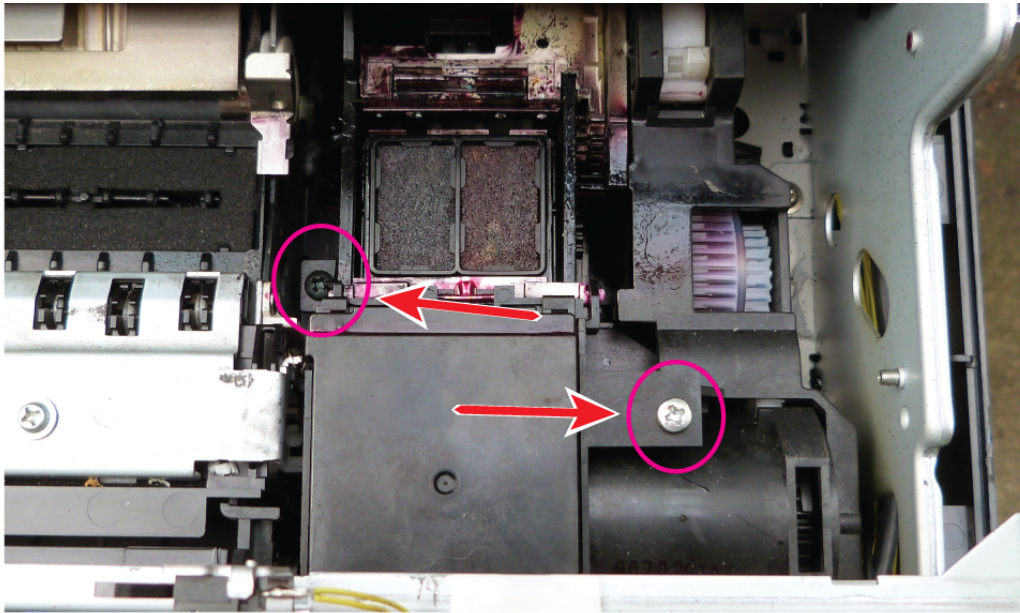
Side View

At this point you'll have to be a bit forceful but gentle (No Rambo stuff)  
pull at the sides one at a time till you can get the cover to shift a bit.  
The cover lifts off from the back first by pulling it up and forwards about 20cm  
then locate the two clips holding onto the front part (Pictures 7 & 8)  
now the cover should be released enough to lift it clear of the printer chassis.

Back View



**These are the Pictures 7 & 8 Showing the Location of the Clips that are Holding on the Front of the Main Case Unit.**



This is where you get a chance to look at the purge unit and pads but directly below the pads there is a black (Blade cleaner Unit box) If you examine this box closely you'll see two screws (Circled) they have to be removed to gain access to the purge unit waste pipe.

Next if you get hold of the bit of plastic sticking out on the right (Circled) with the right hand and using your left fingers under the wiper blade and your thumb on the lid lift the front of the box while jiggling it a bit and it will just pop out easy.